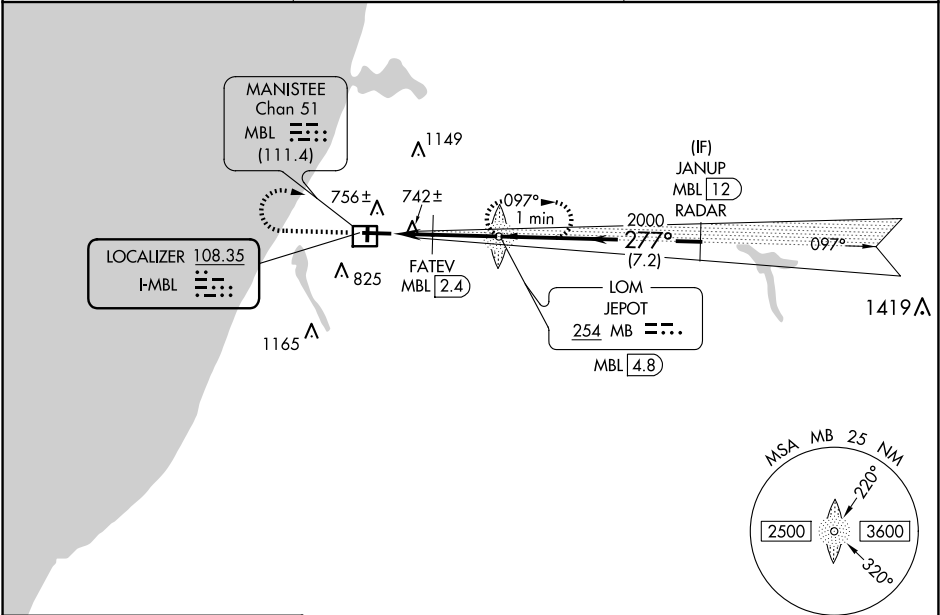


LOC I-MBL	APP CRS	Rwy Idg	5501
108.35	277°	TDZE	621
		Apt Elev	621

ILS or LOC RWY 28
MANISTEE COUNTY/BLACKER (MBL)

ADF required for missed approach. RADAR required for procedure entry. DME or RADAR required.	MALSR	MISSED APPROACH: Climb to 2000 then climbing right turn to 2500 direct JEPOT LOM/MBL 4.8 DME and hold.
<div>⚠</div> <div>⚠</div> <div>Circling Rwy 1, 19 NA at night. For inop ALS, increase FATEV fix minimums S-LOC 28 Cat C and D visibility to 1 SM. DME from MBL DME. DME use requires simultaneous reception of I-MBL and MBL DME.</div>	<div>⚠</div> <div>⚠</div>	

AWOS-3PT 118.825	MINNEAPOLIS CENTER 120.85 322.35	UNICOM 122.8 (CTAF) ⓪
---------------------	-------------------------------------	--------------------------



ELEV 621

D

TDZE 621

61

2721

10

75

1

277°

5501 X 100

28




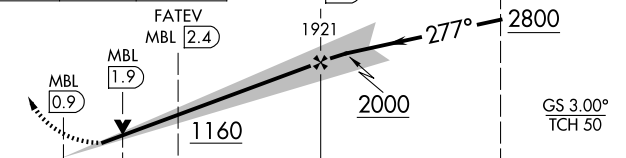


HIRL Rwys 10-28 ⓪

MIRL Rwys 1-19 ⓪

REIL Rwy 10 ⓪

FAF to MAP 3.9 NM

Knots	60	90	120	150	180
Min:Sec	3:54	2:36	1:57	1:34	1:18

2000	2500	MB LOM	VGSI and ILS glidepath not coincident (VGSI Angle 3.00/TCH 45).		
			MB LOM JEPOT MBL 4.8	JANUP MBL 12 RADAR	
			GS 3.00° TCH 50		
CATEGORY	A		B	C	D
S-ILS 28	821-½ 200 (200-½)				
S-LOC 28	1160-½	539 (600-½)		1160-1	539 (600-1)
 CIRCLING	1160-1 539 (600-1)	1220-1 599 (600-1)		1400-2¼ 779 (800-2¼)	1520-3 899 (900-3)
FATEV FIX MINIMUMS					
S-LOC 28	1000-½	379 (400-½)		1000-⅝	379 (400-⅝)
 CIRCLING	1160-1 539 (600-1)	1220-1 599 (600-1)		1400-2¼ 779 (800-2¼)	1520-3 899 (900-3)

EC-1, 07 AUG 2025 to 04 SEP 2025

EC-1, 07 AUG 2025 to 04 SEP 2025