

WAAS CH <b>50231</b> <b>W05A</b>	APP CRS <b>047°</b>	Rwy Idg TDZE <b>429</b> Apt Elev <b>441</b>	<b>5000</b>
--	------------------------	---	-------------

RNAV (GPS) RWY 5

NORTH CENTRAL STATE (SF'Z)

RNP APCH - GPS.

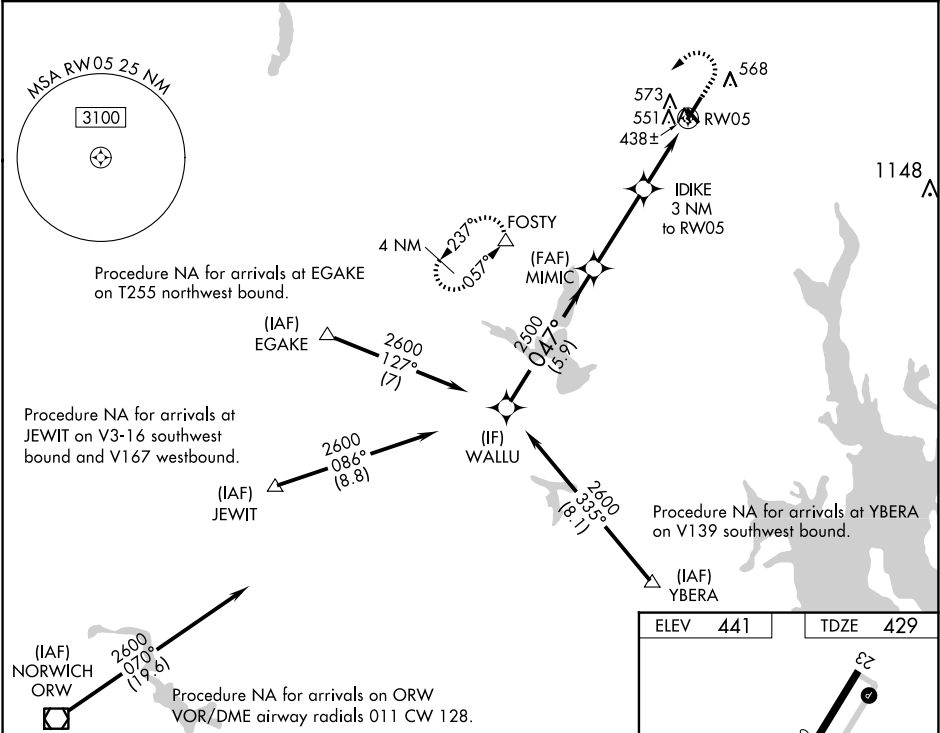
⚠

Circling Rwy 15, 33 NA at night. For inoperative MALS, increase LPV all Cats visibility to ¾ mile. For inop ALS, increase LPV all Cats visibility to ¾ SM and LNAV/VNAV all Cats visibility to 1 ½ SM. For uncompensated Baro-VNAV systems, LNAV/VNAV NA below -15°C or above 54°C.

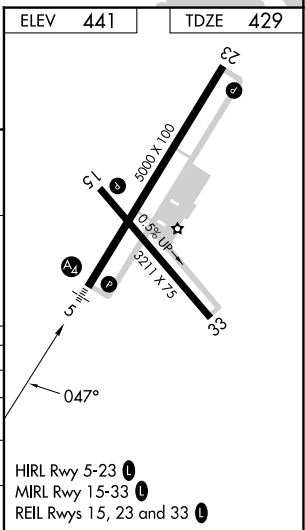
MALS

MISSED APPROACH:  
Climb to 2000 then  
climbing left turn to  
2500 direct FOSTY  
and hold.

AWOS-3PT <b>120.775</b>	PROVIDENCE APP CON ★ <b>123.675 244.875</b>	CLNC DEL <b>124.35</b>	UNICOM <b>123.075 (CTAF) 0</b>
----------------------------	--	---------------------------	-----------------------------------



WALLU		MIMIC		IDIKE		FOSTY	
2600		2500		2500		2500	
GP 3.00°		047°		1.1 NM to RW05		1.1 NM to RW05	
TCH 52		2500		3.4 NM		1.9 NM	
5.9 NM		*1420		1.1 NM		1.1 NM	
CATEGORY	A	B	C	D			
LPV DA	700-¾	271 (300-¾)	NA				
LNAV/VNAV DA	835-1	406 (400-1)	NA				
LNAV MDA	820-¾	391 (400-¾)	820-7/8	391 (400-7/8)	NA		
CIRCLING	900-1	459 (500-1)	900-1½	459 (500-1½)	NA		



NE-1, 07 AUG 2025 to 04 SEP 2025

NE-1, 07 AUG 2025 to 04 SEP 2025