

WAAS CH 86431 W23A	APP CRS 227°	Rwy Idg TDZE Apt Elev	5000 429 441
--	------------------------	-----------------------------	---

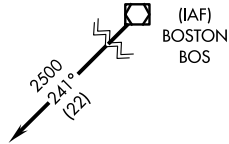
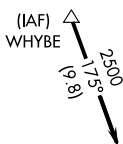
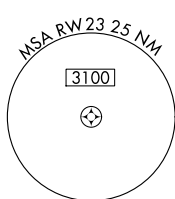
RNAV (GPS) RWY 23

NORTH CENTRAL STATE (SFZ)

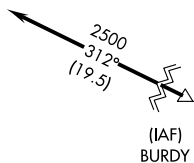
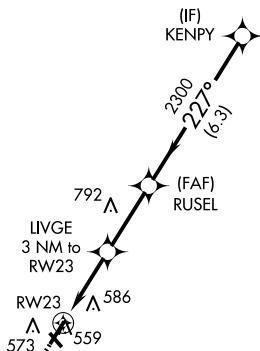
▼ Circling Rwy 15, 33 NA at night. Baro-VNAV NA when using Providence altimeter setting. For uncompensated Baro-VNAV systems, LNAV/VNAV NA below -15°C (4°F) or above 54°C (130°F).
▲ DME/DME RNP-0.3 NA. VDP NA with Providence altimeter setting. When local altimeter setting not received, use Providence altimeter setting and increase all DA 82 feet and all MDA 100 feet; increase LPV all Cats visibility to 1½, LNAV/VNAV all Cats visibility to 1¼ and LNAV Cat C visibility to 1¾. Rwy 23 helicopter visibility reduction below ¾ SM NA.

MISSED APPROACH:
Climb to 2600 direct
WALLU and hold.

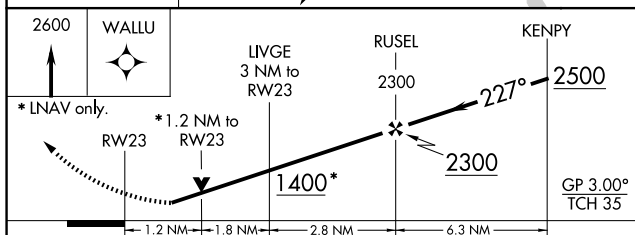
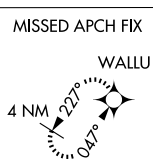
AWOS-3PT 120.775	PROVIDENCE APP CON ★ 123.675 244.875	CLNC DEL 124.35	UNICOM 123.075 (CTAF) ①
----------------------------	--	---------------------------	-----------------------------------




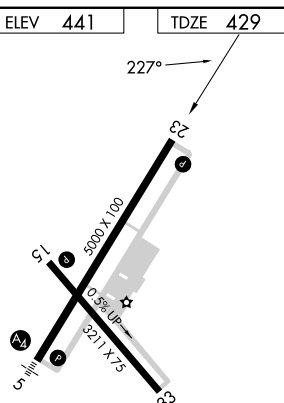
Procedure NA for arrivals on BOS
VOR/DME airway radials 240 CW 278.



Procedure NA for arrivals at BURDY
on V139-268 northeast bound.



CATEGORY		A	B	C	D
LPV	DA	679-7/8	250 (300-7/8)		NA
RNAV/ VNAV	DA	849-1 1/2	420 (500-1 1/2)		NA
RNAV	MDA	820-1	391 (400-1)	820-1 1/8 391 (400-1 1/8)	NA
 CIRCLING		900-1	459 (500-1)	900-1 1/2 459 (500-1 1/2)	NA



HIRL Rwy 5-23 **L**
MIRL Rwy 15-33 **L**
REIL Rwy 15, 23 and 33 **L**