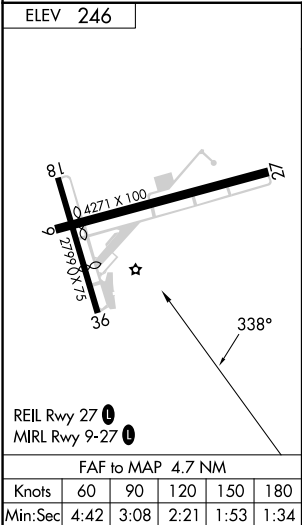
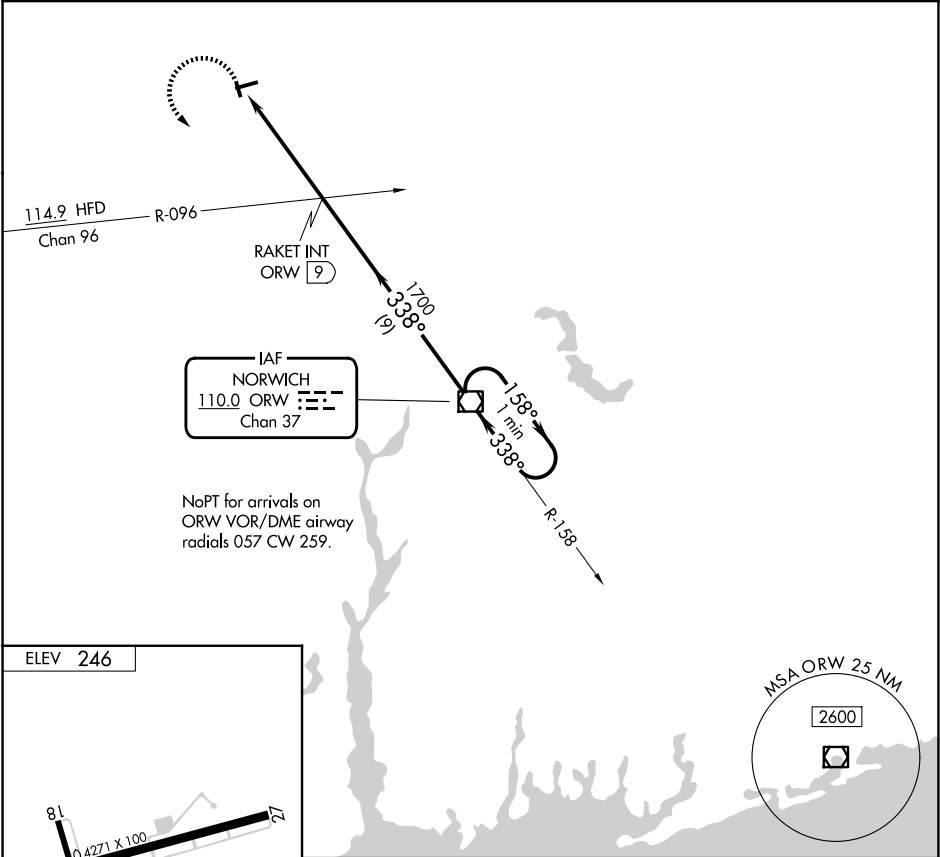


VOR/DME ORW	APP CRS	Rwy Ldg	N/A
<b>110.0</b>	<b>338°</b>	TDZE	<b>N/A</b>
Chan <b>37</b>		Apt Elev	<b>246</b>

VOR-A

WINDHAM (IJD)

<div><div>▼</div><div>▲</div></div> <div>Procedure NA at night. Visibility reduction by helicopters NA.</div>		MISSED APPROACH: Climbing left turn to 2600 direct ORW VOR/DME and hold.	
ASOS <b>133.675</b>	YANKEE APP CON <b>127.8 269.325</b>	CLNC DEL <b>128.6</b>	UNICOM <b>122.975</b> (CTAF) <b>0</b>



<div>2600</div> <div>ORW</div> <div></div>		<div>ORW VOR/DME</div> <div>One Minute Holding Pattern</div>		
<div>RAKET INT ORW 9</div> <div>ORW 13.7</div> <div>1700</div>		<div>158°</div> <div>338°</div> <div>2600</div>		
4.7 NM		9 NM		
CATEGORY	A	B	C	D
CIRCLING	1020-1 774 (800-1)	1020-1¼ 774 (800-1¼)	1120-2½ 874 (900-2½)	NA

NE-1, 07 AUG 2025 to 04 SEP 2025

NE-1, 07 AUG 2025 to 04 SEP 2025