

APP CRS	Rwy Idg	6757
299°	TDZE	25
	Apt Elev	28

RNAV (GPS) RWY 30
MERCEDITA (PSE) (TJPS)

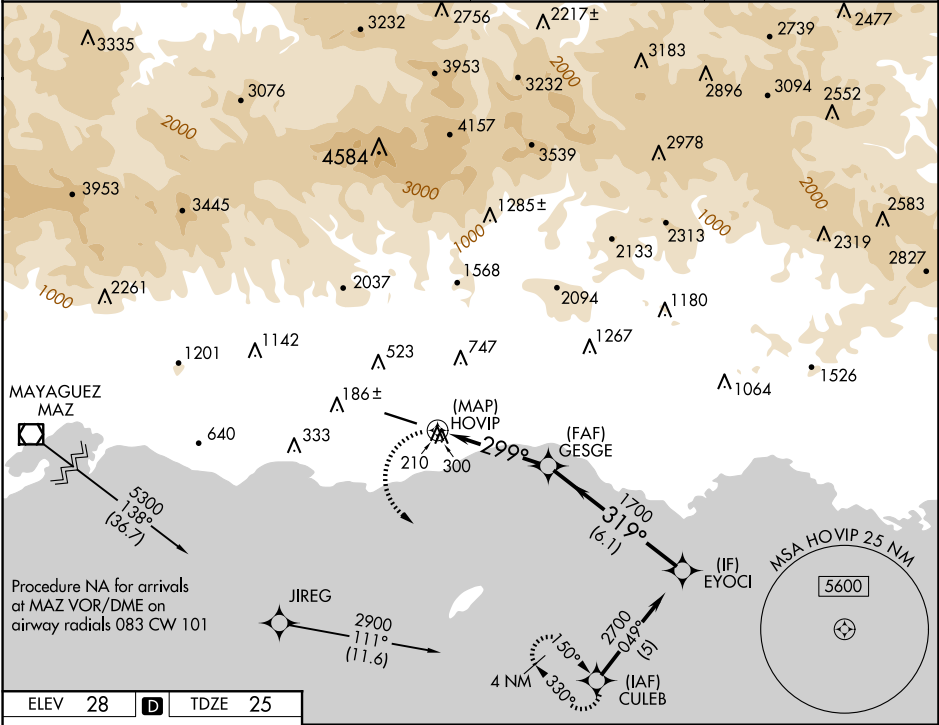
RNP APCH.

▼ Rwy 12, 30 helicopter visibility reduction below 1 SM NA. Obtain local altimeter setting on CTAF; when not received, use Luis Munoz Marin Intl altimeter setting.

▲ NA Circling NA for Cats C and D northeast of Rwy 12-30. Circling Rwy 12 NA at night.

MISSED APPROACH: Climbing left turn to 2900 direct CULEB and hold.

AWOS-3PT 118.4	SAN JUAN CENTER 118.75 269.0	CINC DEL 121.9	UNICOM 122.7 (CTAF) 0
-------------------	---------------------------------	-------------------	--------------------------



ELEV 28	D	TDZE 25
---------	---	---------

2900

CULEB

VGSI and descent angles not coincident

(VGSI Angle 3.00/TCH 53).

EYOCI

2700

GESE

1700

HOVIP

299°

3.07°

TCH 45

319°

0.8

4.2 NM

6.1 NM

Procedure

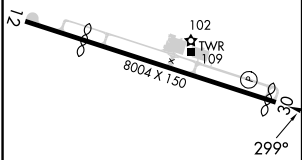
Turn

NA

CATEGORY	A	B	C	D
RNAV MDA	600-1	575 (600-1)	600-1½ 575 (600-1½)	600-1¾ 575 (600-1¾)
CIRCLING	840-1¼	812 (900-1¼)	840-2½ 812 (900-2½)	1040-3 1012 (1100-3)

LUIS MUNOZ MARIN INTL ALTIMETER SETTING MINIMUMS

RNAV MDA	1200-1¼ 1175 (1200-1¼)	1200-1½ 1175 (1200-1½)	1200-3	1175 (1200-3)
CIRCLING	1440-1¼ 1412 (1500-1¼)	1440-1½ 1412 (1500-1½)	1440-3 1412 (1500-3)	1640-3 1612 (1700-3)



HIRL Rwy 12-30 0
REIL Rwy 12 and 30 0