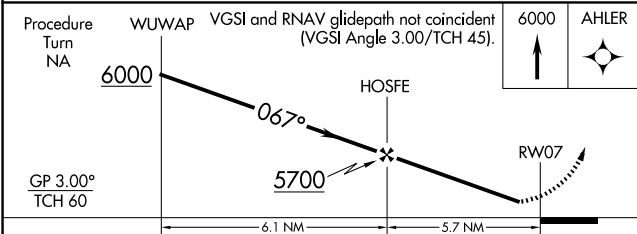
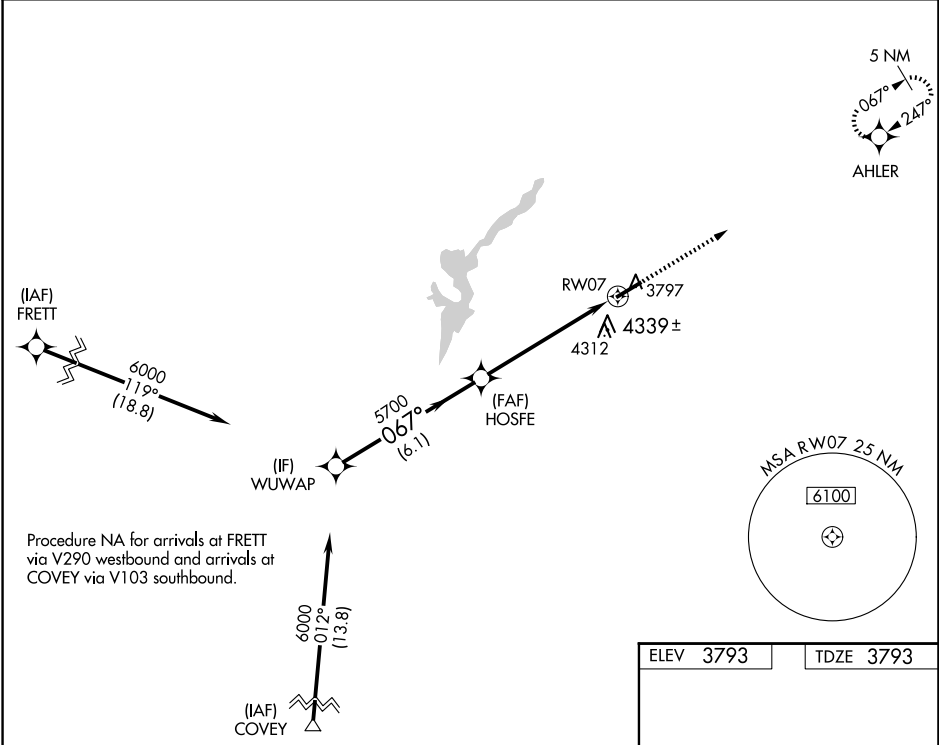


WAAS CH 86813 W07A	APP CRS 067°	Rwy Idg TDZE Apt Elev	5600 3793 3793
--	------------------------	-----------------------------	---

RNAV (GPS) RWY 7
INGALLS FLD (HSP)

T A	Circling NA southeast of Rwy 7-25. Baro-VNAV NA. DME/DME RNP-0.3 NA. Visibility reduction by helicopters NA. When local altimeter setting not received, procedure NA.	MISSED APPROACH: Climb to 6000 direct AHLER and hold.
AWOS-3 118.8	WASHINGTON CENTER 134.4 353.9	UNICOM 123.0 (CTAF) 0



CATEGORY	A	B	C	D
LPV DA	4143-1¼		350 (400-1¼)	
LNAV/VNAV DA	4619-3		826 (900-3)	
LNAV MDA	4700-1¼ 907 (1000-1¼)		4700-2¾ 907 (1000-2¾)	4700-3 907 (1000-3)
C CIRCLING	4700-1¼ 907 (1000-1¼)		4700-2¾ 907 (1000-2¾)	4700-3 907 (1000-3)

