

CODY, WYOMING

AL-5243 (FAA)

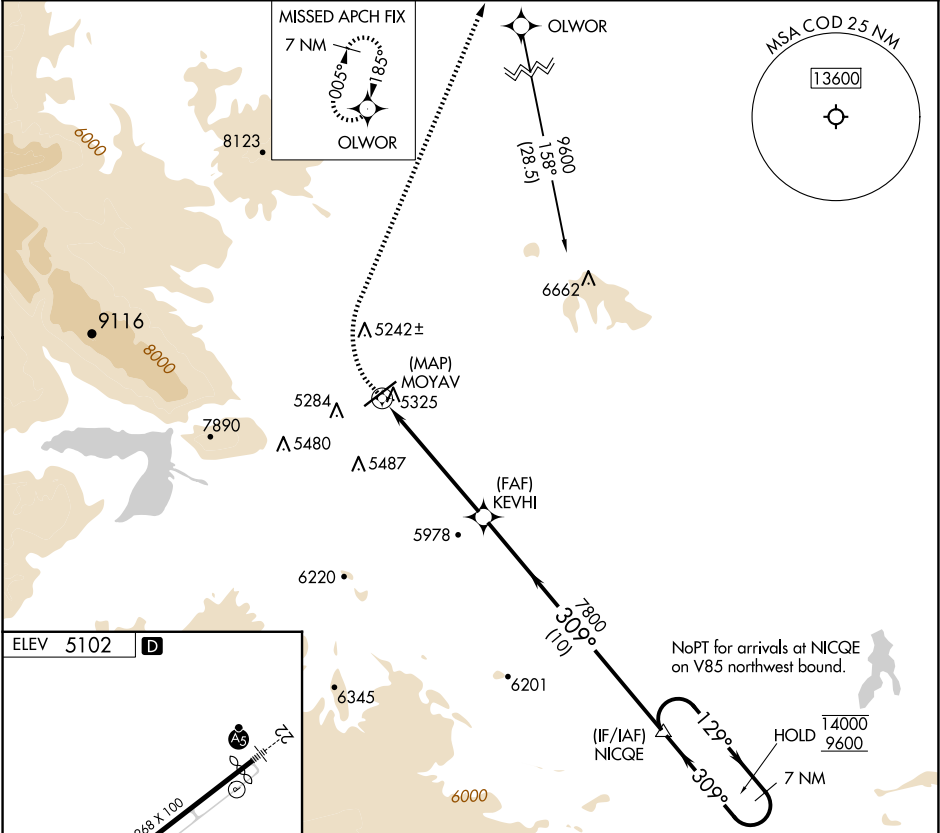
25163

APP CRS <b>309°</b>	Rwy Ldg TDZE Apt Elev <b>5102</b>	N/A N/A <b>5102</b>
------------------------	--	---------------------------

**RNAV (GPS)-B**  
YELLOWSTONE RGNL (COD)

RNP APCH - GPS.		MISSED APPROACH: Climb to 6200 then climbing right turn to 8000 direct OLOWOR and hold.
-10°C		

AWOS-3PT <b>135.075</b>	SALT LAKE CENTER <b>127.75 351.9</b>	UNICOM <b>122.8 (CTAF) 0</b>
----------------------------	---	---------------------------------



ELEV 5102 <b>D</b>		6200 8000 OLOWOR		7 NM Holding Pattern	
MOYAV		KEVHI		NICQE	
5.6 NM		10 NM		129° 14000 309° 9600	
CATEGORY A		B		C	
CIRCLING		6200-1¼ 1098 (1100-1¼)		6200-3 1098 (1100-3)	
		6200-1½ 1098 (1100-1½)		7000-3 1898 (1900-3)	

CODY, WYOMING  
Amdt 1A 26DEC24

44°31'N-109°01'W

**YELLOWSTONE RGNL (COD)**  
**RNAV (GPS)-B**

NW-1, 07 AUG 2025 to 04 SEP 2025

NW-1, 07 AUG 2025 to 04 SEP 2025