

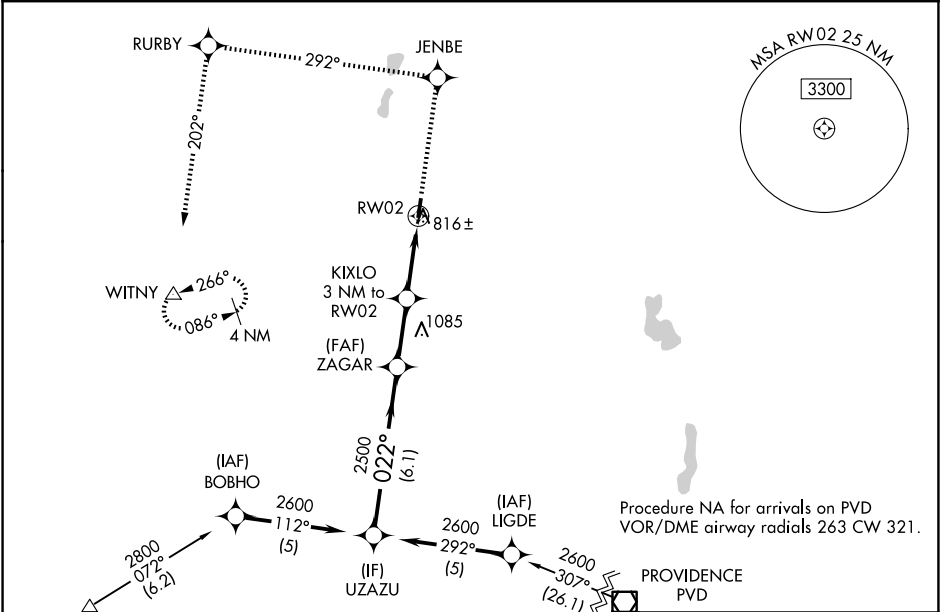
WAAS CH <b>42616</b> <b>W02A</b>	APP CRS <b>022°</b>	Rwy Ldg TDZE <b>696</b> Apt Elev <b>699</b>
--	------------------------	---

RNAV (GPS) RWY 2

SOUTHBRIDGE MUNI (3B0)

RNP APCH - GPS.	MISSED APPROACH: Climb to 3000 direct JENBE and via track 292° to RURBY and via track 202° to WITNY and hold.
▼ ▲ NA	Circling Rwy 20 NA at night. Use Worcester Rgnl altimeter setting, when not received, use Windsor Locks altimeter setting: increase LPV DA to 1090 feet and all visibilities ½ SM. Increase all MDAs 80 feet and LNAV visibility Cat C ¼ SM, and Circling visibility Cat C ½ SM.

YANKEE APP CON <b>119.0 327.1</b>	UNICOM <b>122.8 (CTAF) 0</b>
--------------------------------------	---------------------------------



ELEV 699	TDZE 696
----------	----------

