

WAAS CH <b>70526</b> <b>W05A</b>	APP CRS <b>054°</b>	Rwy Idg <b>5502</b> TDZE <b>455</b> Apt Elev <b>459</b>
--	------------------------	---

# RNAV (GPS) RWY 5

## MOORE COUNTY (SOP)

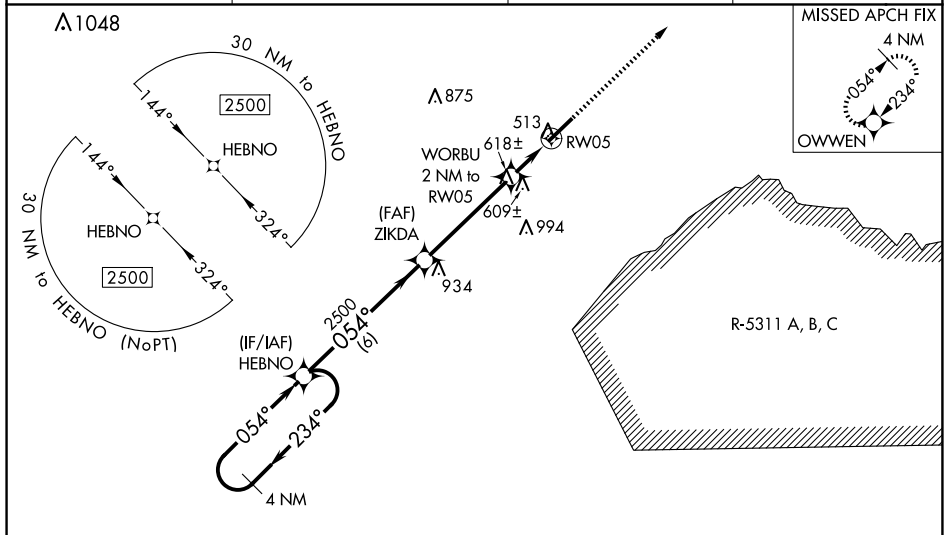
**T** For uncompensated Baro-VNAV systems, LNAV/VNAV NA below -1.5°C (5°F) or above 54°C (130°F). DME/DME RNP-0.3 NA. For inop MALSR, increase LNAV/VNAV all Cats visibility to ¾ mile, LNAV Cats A/B visibility to 1 mile and LNAV Cats C/D visibility to 1½ mile. When local altimeter setting not received, use Sanford altimeter setting and increase all DA 88 feet and all MDA 100 feet, increase LNAV/VNAV all Cats visibility ½ mile, LNAV Cats C/D visibility ¼ mile, and Circling Cat C ½ mile. When using Sanford altimeter setting, for inop MALSR increase LNAV/VNAV all Cats visibility to 1½ mile, LNAV Cats A/B visibility to 1 mile, and LNAV Cat C/D visibility to 1¾ mile. Baro-VNAV and VDP NA when using Sanford altimeter setting.

MALSR



**MISSED APPROACH:**  
Climb to 2500 direct  
OWWEN and hold.

AWOS-3PT <b>127.575</b>	FAYETTEVILLE APP CON <b>127.8 343.725</b>	CLNC DEL <b>127.0</b>	UNICOM <b>123.05 (CTAF) 0</b>
----------------------------	--	--------------------------	----------------------------------



**4 NM Holding Pattern**

GP 3.00°  
TCH 39

HEBNO  
ZIKDA 2500  
WORBU 2 NM to RW05

\*LNAV only

CATEGORY	A	B	C	D
LPV DA	655-½		200 (200-½)	
LNAV/ VNAV DA	750-½		295 (300-½)	
LNAV MDA	860-½ 405 (500-½)		860-¾ 405 (500-¾)	
<b>C</b> CIRCLING	880-1 421 (500-1)	920-1 461 (500-1)	1100-1¼ 641 (700-1¼)	1360-3 901 (1000-3)

