

WAAS CH 42726 W23A	APP CRS 234°	Rwy Idg 5722 TDZE 443 Apt Elev 459
--	------------------------	---

RNAV (GPS) RWY 23

MOORE COUNTY (SOP)

RNP APCH.

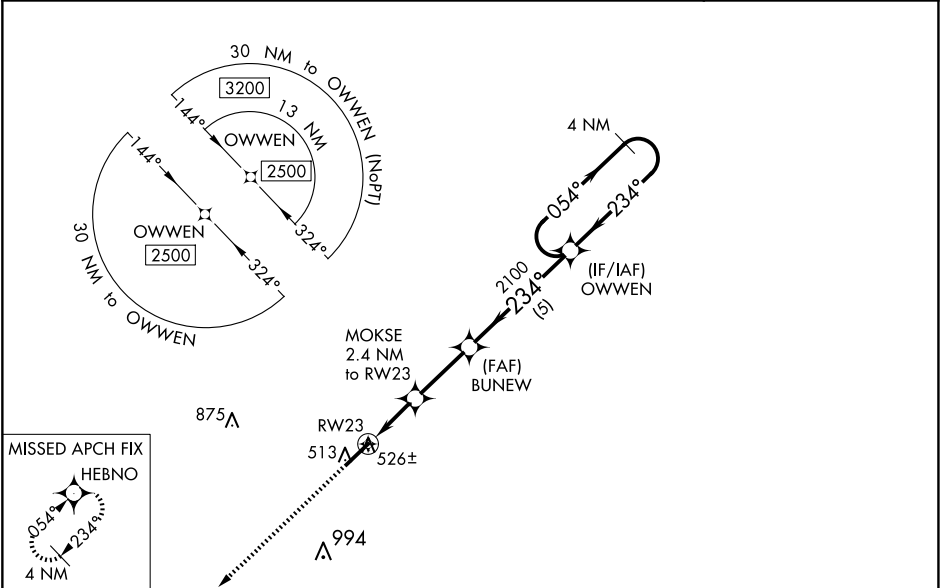
▼

Baro-VNAV NA when using Sanford altimeter setting. For uncompensated Baro-VNAV systems, LNAV/VNAV NA below -15°C or above 54°C. When local altimeter setting not received, use Sanford altimeter setting and increase all DA 88 feet and all MDA 100 feet; increase LNAV Cats C/D visibility ³/₈ mile and Circling Cat C visibility ¹/₂ mile. Rwy 23 helicopter visibility reduction below ³/₄ SM NA.

MISSED APPROACH:

Climb to 2500 direct HEBNO and hold.

AWOS-3PT 127.575	FAYETTEVILLE APP CON 127.8 343.725	CLNC DEL 127.0	UNICOM 123.05 (CTAF) 1
----------------------------	---	--------------------------	----------------------------------



ELEV 459	D	TDZE 443
-----------------	----------	-----------------

2500

HEBNO

VGSI and RNAV glidepath not coincident (VGSI Angle 3.00/TCH 41).

4 NM

Holding Pattern

*LNAV only

MOKSE 2.4 NM to RW23

BUNEW 2100

OWWEN 2500

GP 3.00° TCH 54

2.4 NM

2.7 NM

5 NM

CATEGORY	A	B	C	D
LPV DA		693-1	250 (300-1)	
LNAV/VNAV DA		699-1	256 (300-1)	
LNAV MDA		780-1	337 (400-1)	
C CIRCLING	880-1 421 (500-1)	920-1 461 (500-1)	1100-1 ³ / ₄ 641 (700-1 ³ / ₄)	1360-3 901 (1000-3)

REIL Rwy 23 1
HIRL Rwy 5-23 1