

LOC/DME I-SOP	APP CRS	Rwy Idg	5502
111.5	054°	TDZE	455
Chan 52		Apt Elev	459

ILS Y or LOC Y RWY 5

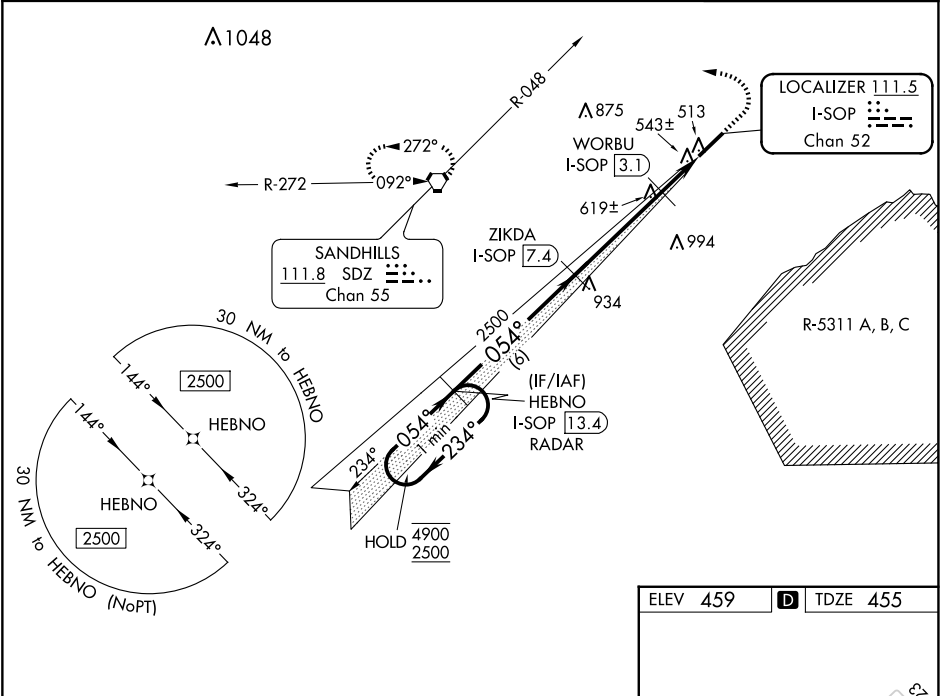
MOORE COUNTY(SOP)

DME required.
RNAV-1 GPS or RADAR required.

MALSR

MISSED APPROACH: Climb to 1400 then climbing left turn to 3300 on heading 300° and on SDZ VORTAC R-048 to SDZ VORTAC and hold.

AWOS-3PT 127.575	FAYETTEVILLE APP CON 127.8 343.725	CLNC DEL 127.0	UNICOM 123.05(CTAF)
---------------------	---------------------------------------	-------------------	------------------------



One Minute Holding Pattern	<div>HEBNO I-SOP 13.4 RADAR</div> <div>ZIKDA I-SOP 7.4</div> <div>WORBU I-SOP 3.1</div> <div>SDZ R-048</div> <div>SDZ</div> <div>*LOC only</div>				
	<div>4900 ← 234°</div> <div>2500 ← 054°</div> <div>GS 3.00° TCH 39</div> <div>6 NM</div> <div>4.3 NM</div> <div>1 NM</div> <div>1 NM</div>				
	CATEGORY	A	B	C	D
	S-ILS 5	655-½		200 (200-½)	
S-LOC 5	800-½		800-⅝		
	345 (400-½)		345 (400-⅝)		
	880-1		1100-1¼		
CIRCLING	920-1		1360-3		
	421 (500-1)		641 (700-1¼)		
	461 (500-1)		901 (1000-3)		

