

EVELETH, MINNESOTA

AL-5236 (FAA)

23222

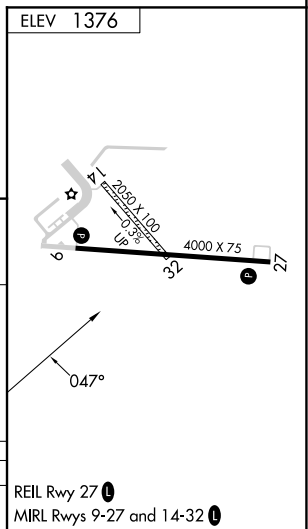
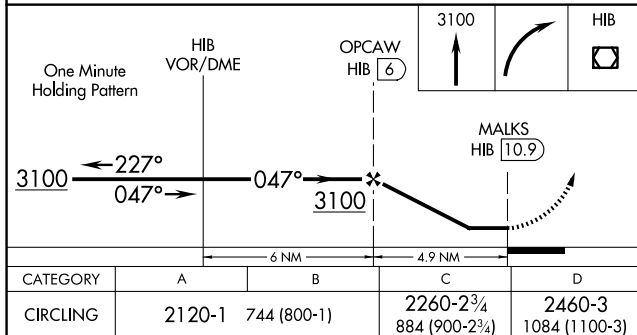
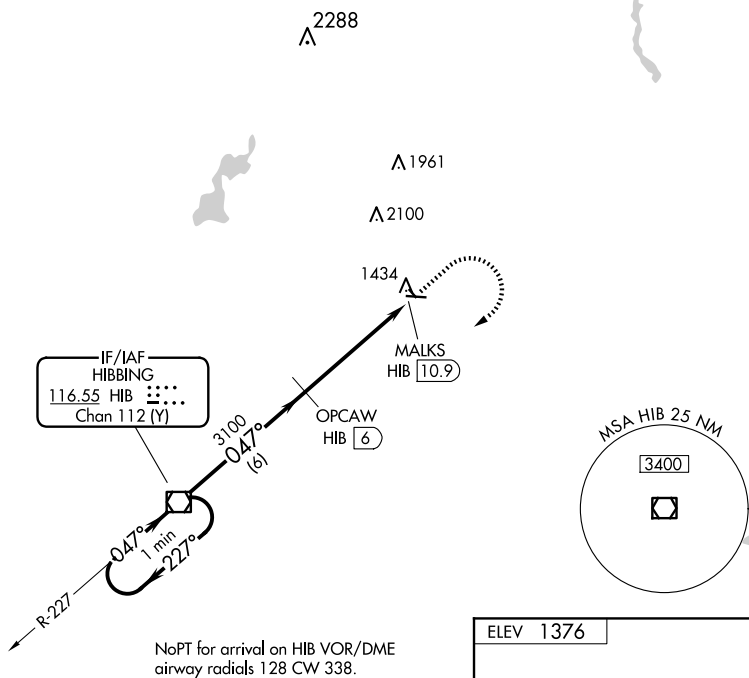
VOR/DME HIB <b><u>116.55</u></b> Chan <b>112</b> (Y)	APP CRS <b>047°</b>	Rwy Idg TDZE Apt Elev	<b>N/A</b> <b>N/A</b> <b>1376</b>
--	------------------------	-----------------------------	---

VOR-A  
EVELETH/VIRGINIA MUNI (EVM)

**T** When local altimeter setting not received, use Hibbing altimeter setting and increase all MDA 40 feet. Rwy 27 helicopter visibility reduction below  $\frac{3}{4}$  SM NA. Circling to Rwy 14 and 32 NA. DME required.

**MISSED APPROACH:** Climb to 3100 then right turn direct HIB VOR/DME and hold.

AWOS-3 <b>118.825</b>	DULUTH APP CON <b>125.45 233.7</b>	UNICOM <b>122.7 (CTAF) 0</b>
--------------------------	---------------------------------------	---------------------------------



EVELETH, MINNESOTA

Amdt 2B 09SEP21

47°25'N-92°30'W

EVELETH/VIRGINIA MUNI (EVM)

VOR-A

NC-1, 07 AUG 2025 to 04 SEP 2025