

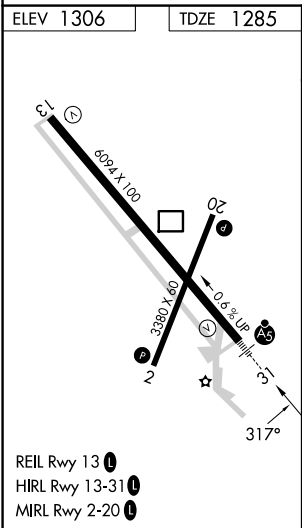
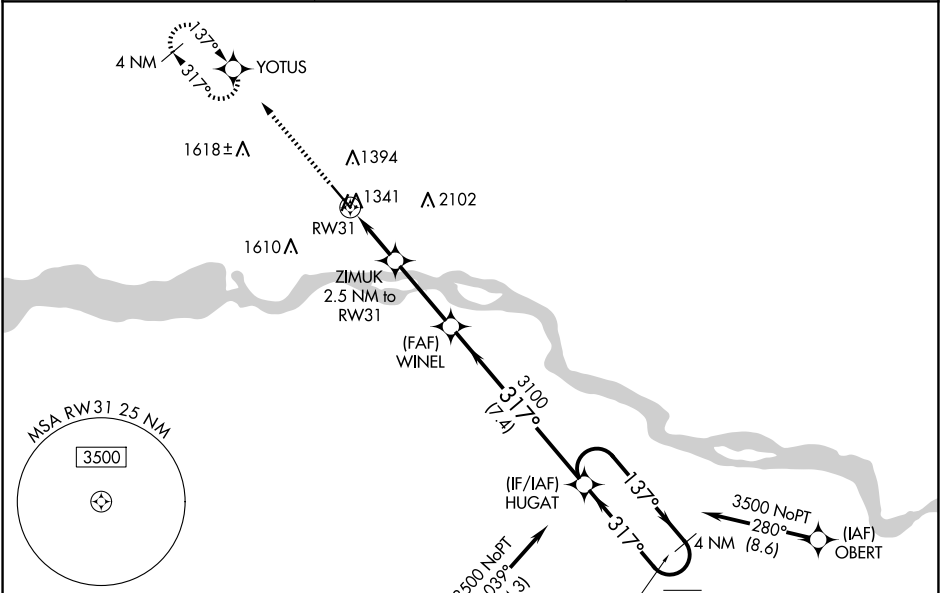
WAAS CH 50521 W31A	APP CRS 317°	Rwy Ldg TDZE Apt Elev	6094 1285 1306
--	------------------------	-----------------------------	---




RNAV (GPS) RWY 31

CHAN GURNEY MUNI (YKN)

RNP APCH - GPS.	MALSR	MISSED APPROACH: Climb to 3500 direct YOTUS and hold, continue climb-in-hold to 3500.
<div><div></div><div></div><div></div></div> <div>Circling NA east of Rwy 20 and northeast of Rwy 31. For uncompensated Baro-VNAV systems, LNAV/VNAV NA below -21°C or above 54°C. For inop ALS increase LPV and LNAV/VNAV all Cats visibility to ¾ SM and LNAV visibility all Cats to 1 SM.</div>	<div><div></div><div></div><div></div></div>	

AWOS-3PT 119.05	MINNEAPOLIS CENTER 125.025 235.625	UNICOM 122.8 (CTAF)
---------------------------	--	-------------------------------



 (IAF) HARDS		HOLD <u>3500</u>		△ 2465	
3500 ↑ 	YOTUS				
 RW31		HUGAT			
0.9 NM to RW31		ZIMUK 2.5 NM to RW31		4 NM Holding Pattern	
0.9 NM		2100		137° → 6000 ← 317° 3500	
1.6 NM		WINEL 3100		3100	
3.1 NM		7.4 NM		GP 3.00° TCH 51	
CATEGORY		A		B	
LPV DA		1485-½		200 (200-½)	
LNAV/VNAV DA		1535-½		250 (300-½)	
LNAV MDA		1600-½		315 (300-½)	
CIRCLING		1760-1 454 (500-1)		1780-1 474 (500-1)	
		1980-2 674 (700-2)		1980-2¼ 674 (700-2¼)	

NC-1, 07 AUG 2025 to 04 SEP 2025

NC-1, 07 AUG 2025 to 04 SEP 2025