

WAAS
CH **50400**
W13A

APP CRS
137°

Rwy Ldg
TDZE **1306**
Apt Elev **1306**

RNAV (GPS) RWY 13

CHAN GURNEY MUNI (YKN)

RNP APCH - GPS.

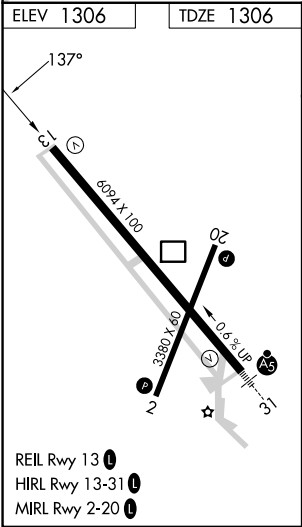
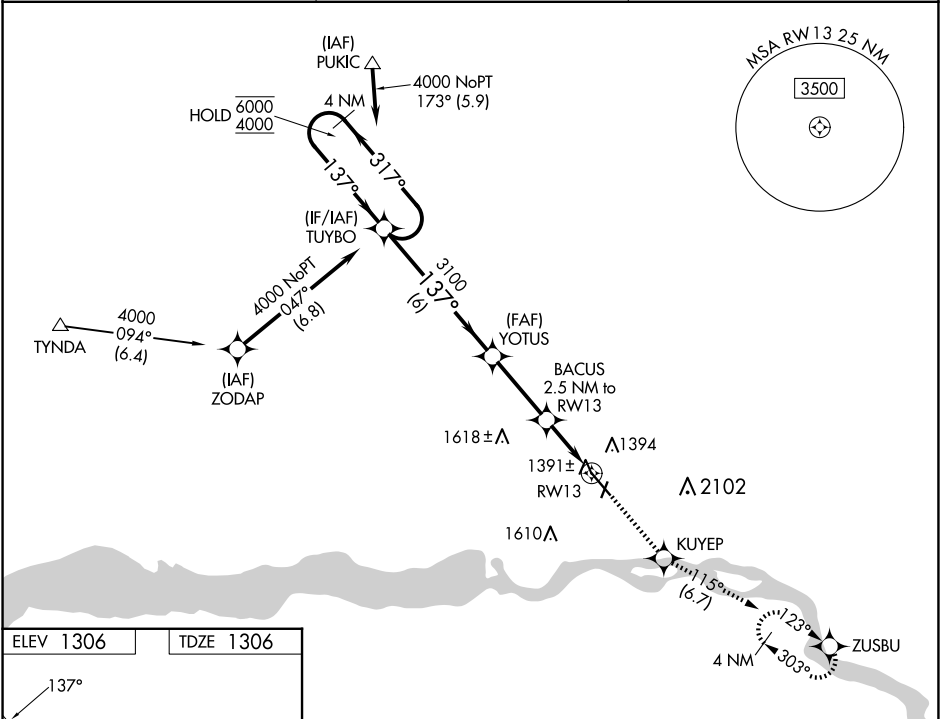
▼

▲

Circling NA east of Rwy 20 and northeast of Rwy 31.
Rwy 13 helicopter visibility reduction below ¾ SM NA.

MISSED APPROACH: Climb to 4000 direct KUYEP and on track 115° to ZUSBU and hold, continue climb-in-hold to 4000.

AWOS-3PT 119.05	MINNEAPOLIS CENTER 125.025 235.625	UNICOM 122.8 (CTAF) 0
---------------------------	--	---------------------------------



VGSI and RNAV glidepath not coincident (VGSI Angle 3.00/TCH 41).				
4 NM Holding Pattern				
6000 ← 317° 4000 ← 137°				
GP 3.00° TCH 45				
TUYBO				
YOTUS				
BACUS 2.5 NM to RW13				
1 NM to RW13				
RW13				
CATEGORY	A	B	C	D
LPV DA	1556-¾ 250 (300-¾)			
LNAV MDA	1660-1 354 (400-1)			
CIRCLING	1760-1 454 (500-1)	1780-1 474 (500-1)	1980-2 674 (700-2)	1980-2½ 674 (700-2½)