

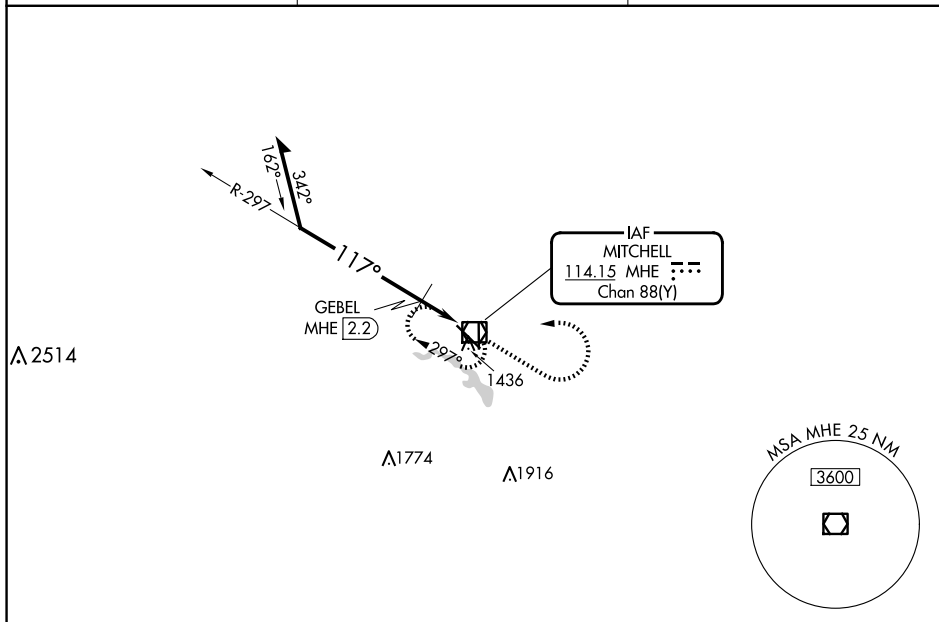
VOR/DME MHE <b>114.15</b> Chan <b>88</b> (Y)	APP CRS <b>117°</b>	Rwy Ldg <b>6701</b> TDZE <b>1301</b> Apt Elev <b>1304</b>
--	------------------------	---

VOR RWY 13  
MITCHELL MUNI (MHE)

**V** VDP NA when using HON altimeter setting. When local altimeter setting not received, use HON altimeter setting and increase all MDAs 100 feet and S-13 visibility Cat C/D ¼ SM and Circling visibility Cat C/D ¼ SM; increase GEBEL fix minimums (DME Required) S-13 visibility Cat C/D ¾ SM, and Circling visibility Cat C/D ¼ SM.

**MISSED APPROACH:** Climb to 2900 then climbing left turn to 3000 direct MHE VOR/DME and hold.

ASOS <b>124.175</b>	MINNEAPOLIS CENTER <b>126.25 339.8</b>	UNICOM <b>122.8 (CTAF) 0</b>
------------------------	---	---------------------------------



NC-1, 07 AUG 2025 to 04 SEP 2025

**HIRL Rwy 13-31**

Remain within 10 NM

MHE VOR/DME 3000

2900

117°

GEBEL MHE 2.2

3.13% TCH 45

MHE 1.7

\*1860

0.5 1.1 NM 0.6

CATEGORY	A	B	C	D
S-13	1860-1	559 (600-1)	1860-1½	559 (600-1½)
<b>C</b> CIRCLING	1860-1	556 (600-1)	1860-1½ 556 (600-1½)	1860-2 556 (600-2)

**GEBEL FIX MINIMUMS (DME REQUIRED)**

S-13	1740-1 436 (500-1)	1760-1 456 (500-1)	1820-1½ 516 (600-1½)	1860-2 556 (600-2)
<b>C</b> CIRCLING				

**ELEV 1304 TDZE 1301**

117°

6701 X 100

81

5513 X 100

0.4 % UP

36

31

HIRL Rwy 13-31

MIRL Rwy 18-36

REIL Rws 13 and 18