

WAAS CH <b>70700</b> <b>W31A</b>	APP CRS <b>310°</b>	Rwy Ldg TDZE <b>1304</b> Apt Elev <b>1304</b>
--	------------------------	---

RNAV (GPS) RWY 31

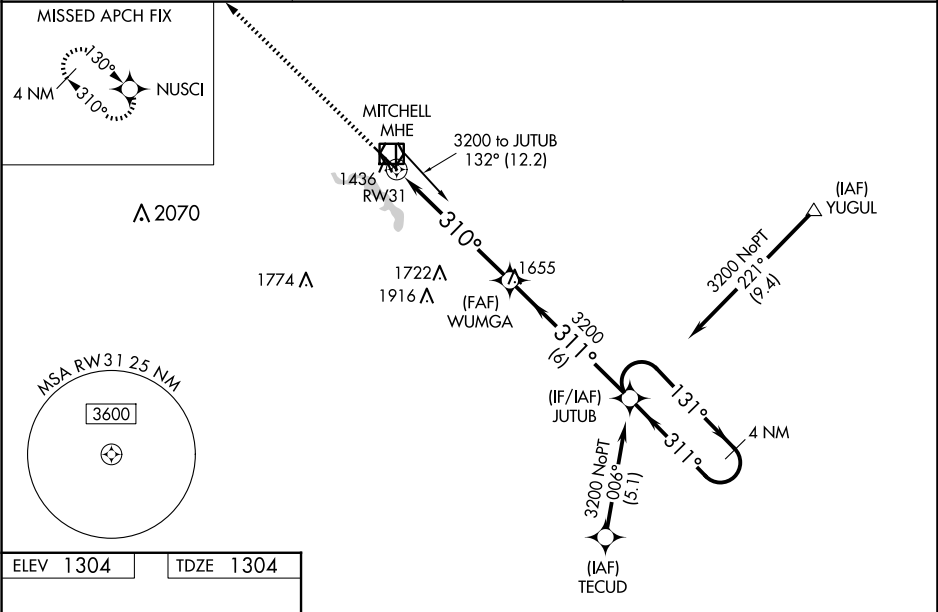
MITCHELL MUNI (MHE)

For uncompensated Baro-VNAV systems, LNAV-VNAV NA below -16°C (4°F) or above 54°C (130°F). Baro-VNAV and VDP NA when using Huron Rgnl altimeter setting. DME/DME RNP-0.3 NA. When local altimeter setting not received, use Huron Rgnl altimeter setting and increase all DA 89 feet and all MDA 100 feet. Increase LPV all Cats visibility 1⁄8 mile. Increase LNAV/VNAV all Cats, LNAV Cats C/D and Circling Cat C visibility 1⁄4 mile. For inop MALSR, increase LNAV/VNAV all Cats visibility to 1 mile and LNAV Cats C/D to 1 3⁄8 mile. For inop MALSR when using Huron Rgnl altimeter setting, increase LPV all Cats visibility to 1 1⁄8 mile.

MALSR

MISSED APPROACH:  
Climb to 3500 direct NUSCI and hold.

ASOS <b>124.175</b>	MINNEAPOLIS CENTER <b>126.25 339.8</b>	UNICOM <b>122.8 (CTAF)</b>
------------------------	---	-------------------------------



ELEV 1304		TDZE 1304		3500 NUSCI		VGSI and RNAV glidepath not coincident (VGSI Angle 3.00/TCH 61).	
*LNAV only		WUMGA		JUTUB		4 NM Holding Pattern	
RW31		*1.4 NM to RW31		3200		131° → 3200	
1.4		4.3 NM		6 NM		GP 3.00°	
CATEGORY		A		B		C	
LPV DA		1554-1⁄2		250 (300-1⁄2)			
LNAV/VNAV DA		1625-5⁄8		321 (400-5⁄8)			
LNAV MDA		1800-1⁄2		496 (500-1⁄2)		1800-1 496 (500-1)	
CIRCLING		1800-1 496 (500-1)		1820-1 1⁄2 516 (600-1 1⁄2)		1860-2 556 (600-2)	