

WAAS CH <b>86938</b> <b>W18A</b>	APP CRS <b>176°</b>	Rwy Ldg TDZE <b>1298</b> Apt Elev <b>1304</b>	<b>5513</b>
--	------------------------	---	-------------

RNAV (GPS) RWY 18

MITCHELL MUNI (MHE)

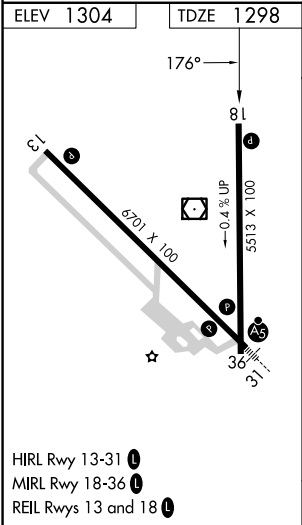
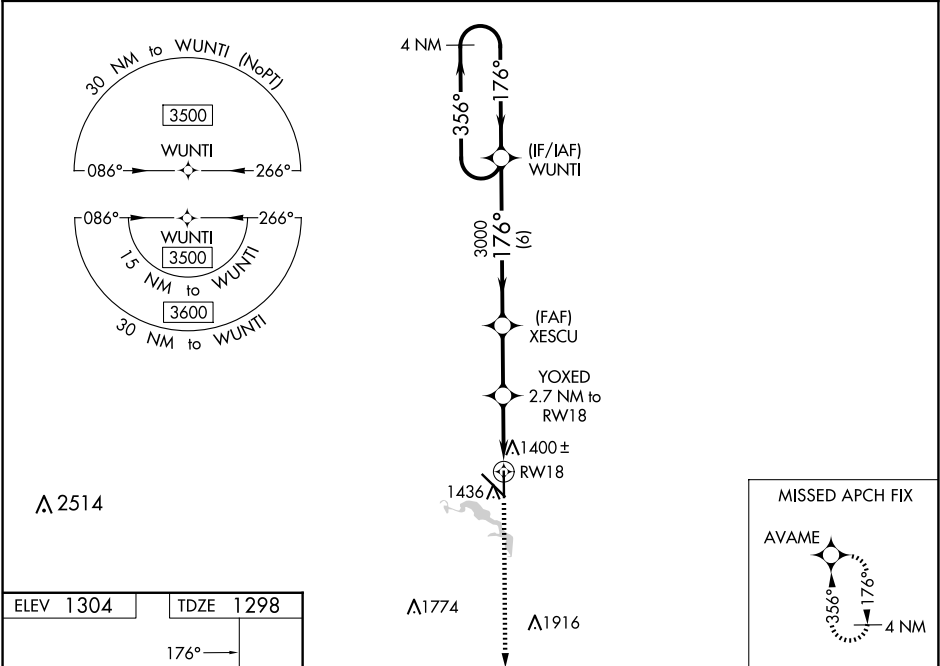
⚠

⚠

For uncompensated Baro-VNAV systems, LNAV/VNAV NA below -20°C (-4°F) or above 54°C (130°F). DME/DME RNP-0.3 NA. When local altimeter setting not received use Huron Rgnl altimeter setting and increase LPV DA to 1637, LNAV/VNAV DA to 1685 and increase all MDA 100 feet. Increase LPV visibility all Cats to 1½ mile, LNAV/VNAV visibility all Cats to 1¾ mile and LNAV Cats C/D to 1¾ mile. Increase Circling Cat C visibility to 1¾ mile. Baro VNAV and VDP NA when using Huron Rgnl altimeter setting.

MISSED APPROACH: Climb to 3500 direct AVAME and hold.

ASOS <b>124.175</b>	MINNEAPOLIS CENTER <b>126.25 339.8</b>	UNICOM <b>122.8 (CTAF) 0</b>
------------------------	---	---------------------------------



4 NM Holding Pattern				
WUNTI				
XESCU				
YOXED 2.7 NM to RW18				
RW18				
GP 3.00° TCH 55				
6 NM 2.5 NM 1.7 NM 1 NM				
CATEGORY	A	B	C	D
LPV DA	1 548-1 250 (300-1)			
LNAV/VNAV DA	1 596-1 298 (300-1)			
LNAV MDA	1 660-1 362 (400-1)			
CIRCLING	1740-1 436 (500-1)	1760-1 456 (500-1)	1820-1½ 516 (600-1½)	1860-2 556 (600-2)

NC-1, 07 AUG 2025 to 04 SEP 2025

NC-1, 07 AUG 2025 to 04 SEP 2025