

WAAS CH <b>77900</b> <b>W13A</b>	APP CRS <b>130°</b>	Rwy Ldg <b>6701</b> TDZE <b>1301</b> Apt Elev <b>1304</b>
--	------------------------	---

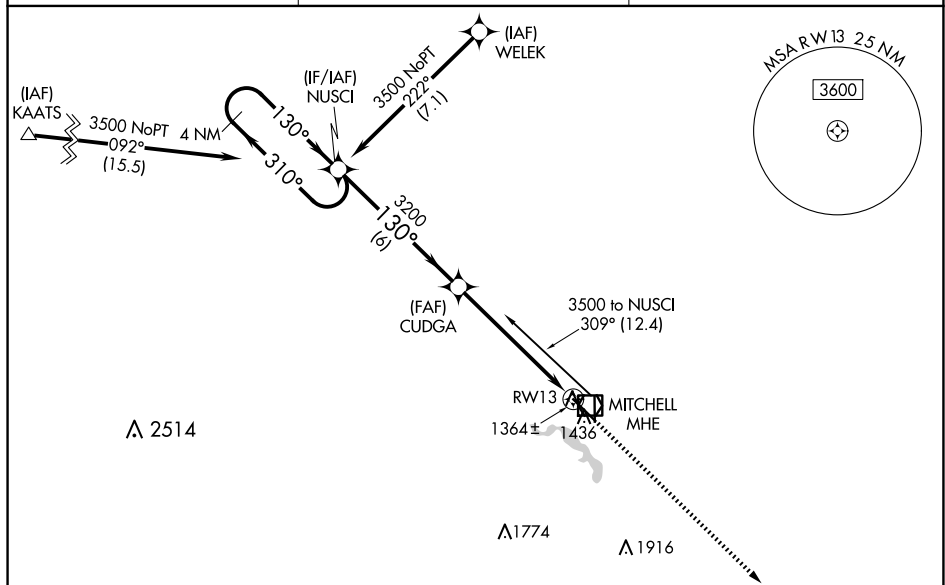
RNAV (GPS) RWY 13  
MITCHELL MUNI (MHE)

**▼** For uncompensated Baro-VNAV systems, LNAV/VNAV NA below -16°C (4°F) or above 54°C (130°F). Baro-VNAV and VDP NA with Huron Rgnl altimeter setting.

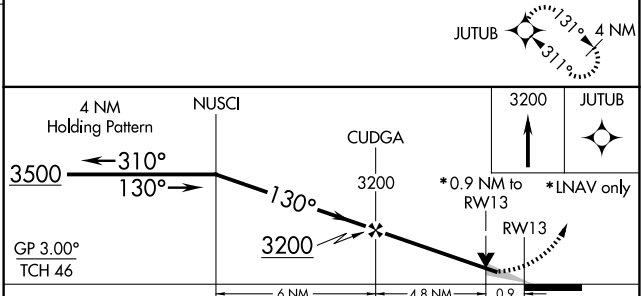
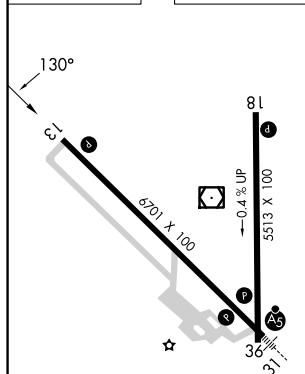
**▲** DME/CAT RNP-0.3 NA. When local altimeter setting not received, use Huron Rgnl altimeter setting and increase all DA 89 feet and all MDA 100 feet. Increase LPV all Cats visibility ¼ mile, LNAV/VNAV all Cats and LNAV Cats C/D visibility ½ mile and Circling Cat C visibility ¼ mile.

**MISSED APPROACH:** Climb to 3200 direct JUTUB and hold.

ASOS <b>124.175</b>	MINNEAPOLIS CENTER <b>126.25 339.8</b>	UNICOM <b>122.8 (CTAF) 0</b>
------------------------	---	---------------------------------



ELEV 1304		TDZE 1301
-----------	--	-----------



CATEGORY		A	B	C	D
LPV	DA	1575-1 274 (300-1)			
LNAV/ VNAV	DA	1627-1½ 326 (400-1½)			
LNAV	MDA	1620-1 319 (400-1)			
<b>C</b> CIRCLING		1740-1¼ 436 (500-1¼)	1760-1¼ 456 (500-1¼)	1820-1½ 516 (600-1½)	1860-2 556 (600-2)

MITCHELL, SOUTH DAKOTA  
Orig-A 10DEC15

43°46'N-98°02'W

MITCHELL MUNI (MHE)  
RNAV (GPS) RWY 13