

MITCHELL, SOUTH DAKOTA

AL-5234 (FAA)

25163

LOC I-LPA <u>109.7</u>	APP CRS 310°	Rwy Ldg TDZE Apt Elev	6701 1304 1304
----------------------------------	------------------------	-----------------------------	---

ILS or LOC RWY 31

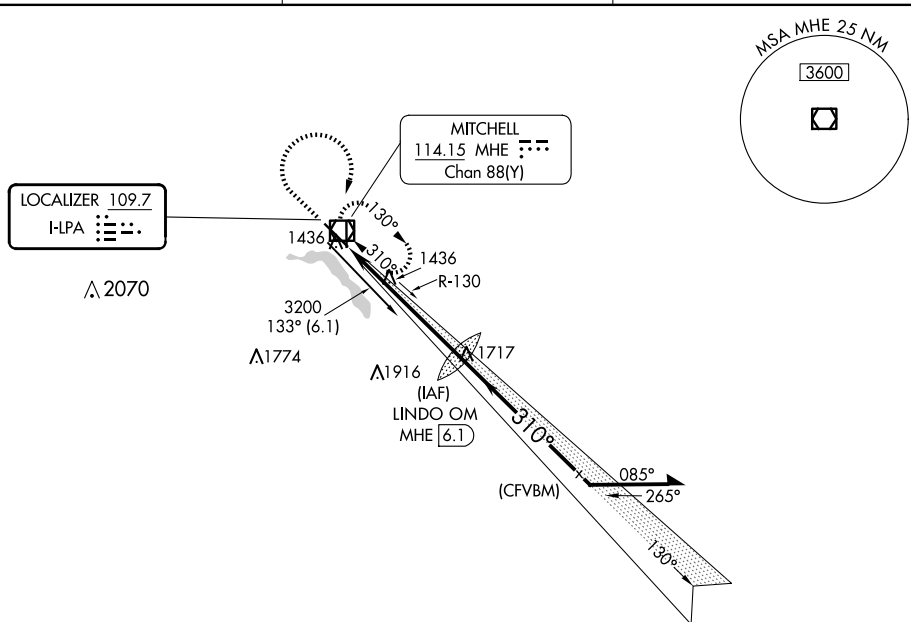
DME required.

T	Autopilot coupled approach NA below 2174 MSL.
A NA	For inop ALS, increase S-LOC 31 Cats C and D visibility to 1 1/8 SM.

MAISR

MISSED APPROACH: Climb to 3200 then right turn direct MHE VOR/DME and hold.

ASOS 124.175	MINNEAPOLIS CENTER 126.25 339.8	UNICOM 122.8 (CTAF) 0
------------------------	---	---------------------------------



FAF to MAP 5.6 NM				
Knots	60	90	120	150
Min:Sec	5:36	3:44	2:48	2:14
				1:52

3200

↑

↗

MHE

*LOC only.

*MHE 1.6

3182

130°

Remain within 10 NM

310°

3200

3200

GS 3.00°

TCH 57

1.1 NM

4.5 NM

UNDO OM MHE 6.1

VGS and ILS glidepath not coincident (VGS Angle 3.00/TCH 61)

MITCHELL, SOUTH DAKOTA

Orig-C 08NOV18

43°46'N-98°02'W

MITCHELL MUNI (MHE)
ILS or LOC RWY 31

NC-1, 07 AUG 2025 to 04 SEP 2025