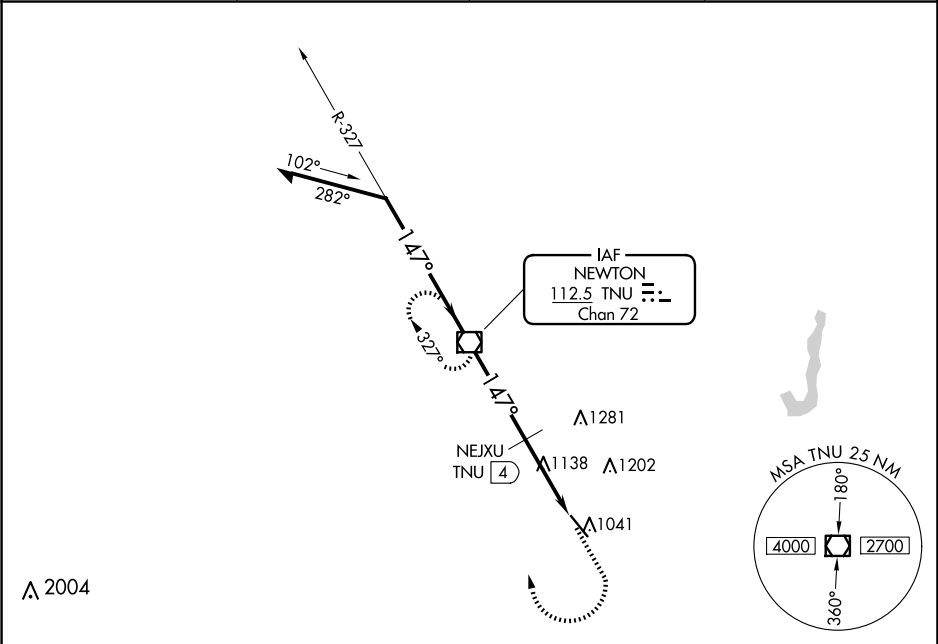


VOR/DME TNU	APP CRS	Rwy Idg	5600
112.5	147°	TDZE	953
Chan 72		Apt Elev	953

VOR RWY 14

NEWTON MUNI-EARL JOHNSON FLD (TNU)

▼ ▲ Rwy 14 helicopter visibility reduction below ¾ SM NA.		MISSED APPROACH: Climb to 2700 then right turn direct TNU VOR/DME and hold.	
AWOS-3 132.275	DES MOINES APP CON 123.9 307.15	CLNC DEL 126.3	UNICOM 122.8 (CTAF) 0



VGSI and descent angles not coincident (VGSI Angle 3.00/TCH 39).		2700	TNU	ELEV 953	TDZE 953
Remain within 10 NM		327°	147°	147° 7.2 NM from FAF	
2700		2700	1460	5600 x 100	
		4 NM	3.2 NM		
CATEGORY	A	B	C	D	
S-14	1460-1	507 (600-1)	1460-1⅜ 507 (600-1⅜)	1460-1½ 507 (600-1½)	
CIRCLING	1460-1	507 (600-1)	1520-1½ 567 (600-1½)	1600-2 647 (700-2)	
NEXJU DME MINIMUMS					
S-14	1400-1	447 (500-1)	1400-1⅜ 447 (500-1⅜)	1400-1½ 447 (500-1½)	
CIRCLING	1420-1 467 (500-1)	1440-1 487 (500-1)	1520-1½ 567 (600-1½)	1600-2 647 (700-2)	
REIL Rwy 14 0 MIRL Rwy 14-32 0					FAF to MAP 7.2 NM
					Knots 60 90 120 150 180
					Min:Sec 7:12 4:48 3:36 2:53 2:24