

WAAS CH 99702 W32A	APP CRS 321°	Rwy Idg 5600 TDZE 950 Apt Elev 953
--	------------------------	---

RNAV (GPS) RWY 32

NEWTON MUNI-EARL JOHNSON FLD (TNU)

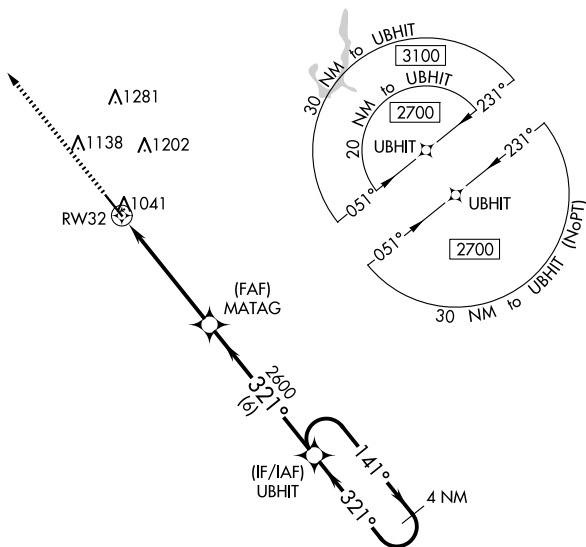


For uncompensated Baro-VNAV systems, LNAV/VNAV NA below -19°C (2°F) or above 54°C (130°F). DME/DME RNP-0.3 NA.
For inop MALSR, increase LNAV/VNAV all Cats visibility to $\frac{3}{4}$ SM.



MISSED APPROACH: Climb to 3100
direct KOWDO and hold.

AWOS-3 132.275	DES MOINES APP CON 123.9 307.15	CLNC DEL 126.3	UNICOM 122.8 (CTAF) 0
--------------------------	---	--------------------------	---------------------------------



ELEV 953		TDZE 950
----------	--	----------

