

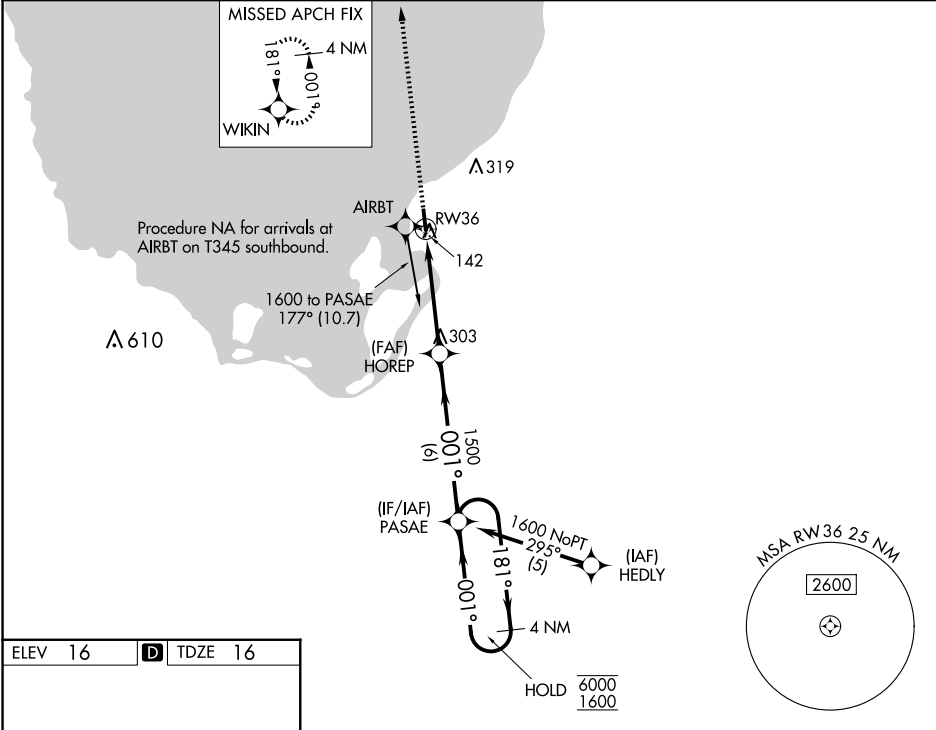
WAAS CH 56408 W36A	APP CRS 001°	Rwy Ldg 4069 TDZE 16 Apt Elev 16
--	------------------------	---

RNAV (GPS) RWY 36

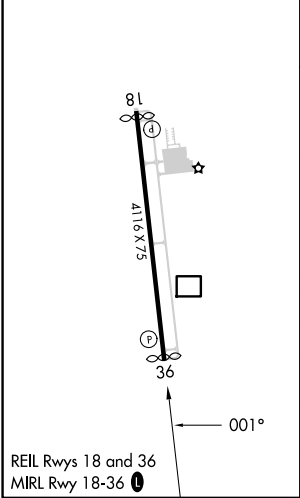
PALM BEACH COUNTY GLADES (PHK)

RNP APCH - GPS.	MISSED APPROACH: Climb to 2000 direct WIKIN and hold.
▼ ▲ NA	Baro-VNAV NA. Use PBI altimeter setting; when not received, procedure NA.

PBI ASOS 123.75	PALM BEACH APP CON 125.2 317.4	UNICOM 122.8 (CTAF) 0
---------------------------	--	---------------------------------



ELEV 16	D	TDZE 16
---------	----------	---------



2000	WIKIN	VGSI and RNAV glidepath not coincident (VGSI Angle 3.00/TCH 44).		4 NM Holding Pattern
HOREP		PASAE		
1500		181° → 6000 ← 001° 1600		
1500		GP 3.00° TCH 55		
4.5 NM		6 NM		
CATEGORY	A	B	C	D
LPV DA	471-1 ³ / ₈ 455 (500-1 ³ / ₈)			
LNAV/VNAV DA	429-1 ¹ / ₈ 413 (500-1 ¹ / ₈)			
LNAV MDA	540-1 524 (600-1)		540-1 ¹ / ₂ 524 (600-1 ¹ / ₂)	
C CIRCLING	580-1 564 (600-1)		760-2 ¹ / ₄ 744 (800-2 ¹ / ₄) 760-2 ¹ / ₂ 744 (800-2 ¹ / ₂)	

SE-3, 07 AUG 2025 to 04 SEP 2025

SE-3, 07 AUG 2025 to 04 SEP 2025