

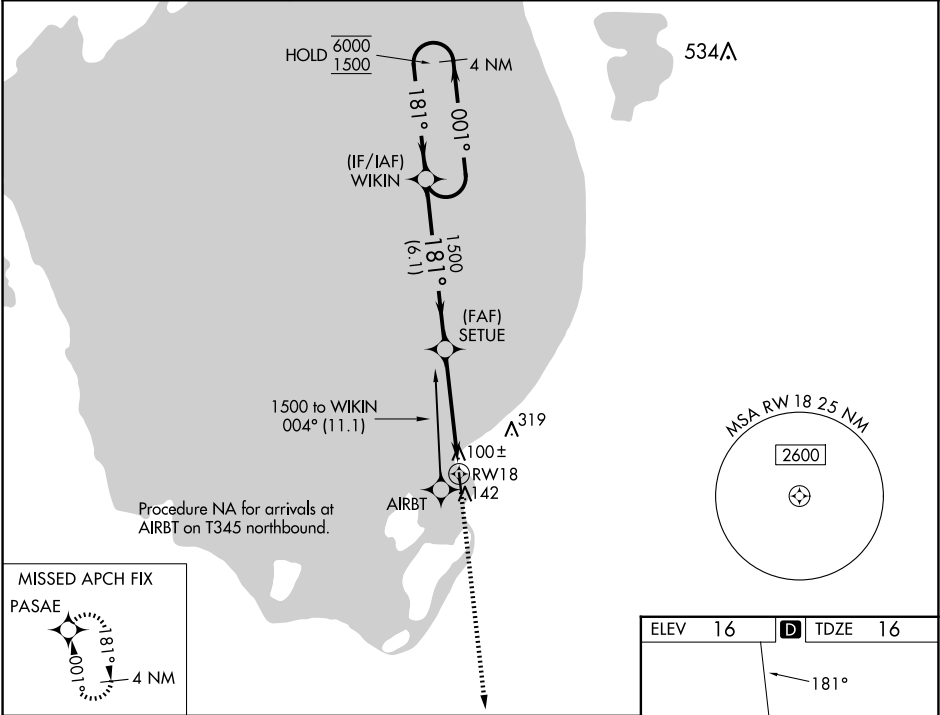


WAAS CH 53408 W18A	APP CRS 181°	Rwy Ldg TDZE 16 Apt Elev 16
--	------------------------	---

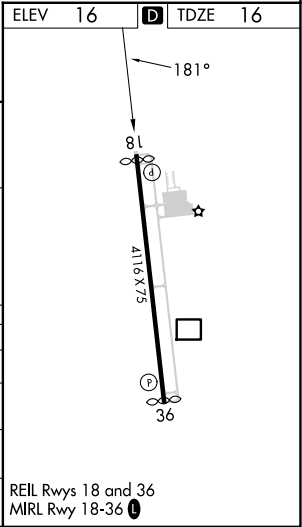
RNAV (GPS) RWY 18
PALM BEACH COUNTY GLADES (PHK)

RNP APCH - GPS.		MISSED APPROACH: Climb to 2000 direct PASAE and hold.
 Rwy 18 helicopter visibility reduction below ¾ SM NA. Use PBI altimeter setting;	 NA when not received, procedure NA. Baro-VNAV NA.	

PBI ASOS 123.75	PALM BEACH APP CON 125.2 317.4	UNICOM 122.8 (CTAF) 0
---------------------------	--	---------------------------------



4 NM Holding Pattern		VGSI and RNAV glidepath not coincident (VGSI Angle 3.00°/TCH 44°).		2000	PASAE



SE-3, 07 AUG 2025 to 04 SEP 2025

SE-3, 07 AUG 2025 to 04 SEP 2025