

VORTAC OSH	APP CRS	Rwy Idg	5941
116.75	346°	TDZE	795
Chan 114 (Y)		Apt Elev	808

VOR/DME RWY 36

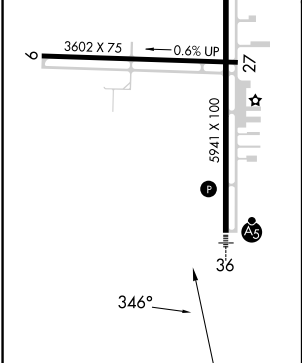
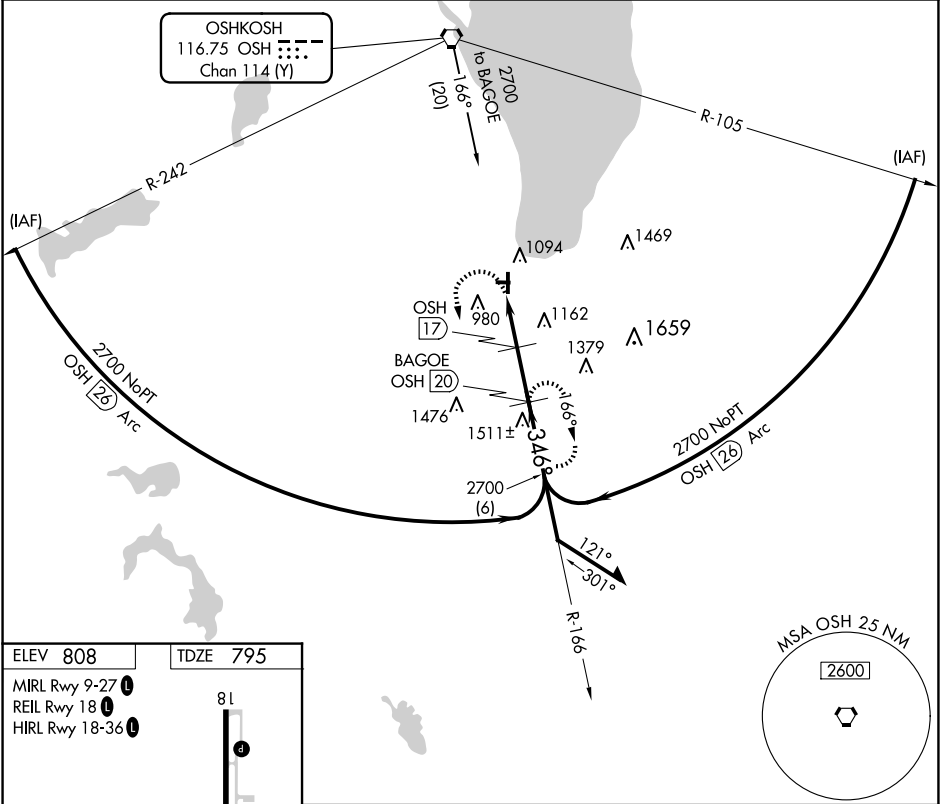
FOND DU LAC COUNTY (F.L.D)

▼ Rwy 36 helicopter visibility reduction below ¾ SM NA. Circling Rwy 9, 27 NA at night. For inop ALS when using Oshkosh altimeter setting, increase S-36 Cat A/B visibility to 1 SM, and Cat C/D to 1½ SM. For inop ALS, increase S-36 Cat A/B visibility to 1 SM, Cat C/D to 1½ SM. When local altimeter setting not received, use Oshkosh altimeter setting and increase all MDAs 40 feet and visibility S-36 Cat C 1½ SM and Circling Cat C/D 1½ SM.

MALSR

MISSED APPROACH:
Climbing left turn to 2700 on OSH R-166 to BAGOE/20 DME and hold.

ASOS	MILWAUKEE APP CON	UNICOM
134.0	127.0 263.075	123.05 (CTAF) 0



2700	BAGOE OSH [20]	OSH [17]	BAGOE OSH [20]	Remain within 10 NM
OSH R-166		OSH [14]	2700	2700
		2.93° TCH 40		
		1700		
		3 NM	3 NM	
				VGSI and descent angles not coincident (VGSI Angle 3.00/TCH 35).
CATEGORY	A	B	C	D
S-36	1420-¾ 625 (700-¾)		1420-1⅝ 625 (700-1⅝)	1420-1½ 625 (700-1½)
CIRCLING	1420-1 612 (700-1)		1520-2 712 (800-2)	1520-2¼ 712 (800-2¼)

EC-3, 07 AUG 2025 to 04 SEP 2025

EC-3, 07 AUG 2025 to 04 SEP 2025