

VORTAC OSH	APP CRS	Rwy Idg	5941
116.75	165°	TDZE	791
Chan 114 (Y)		Apt Elev	808

VOR RWY 18

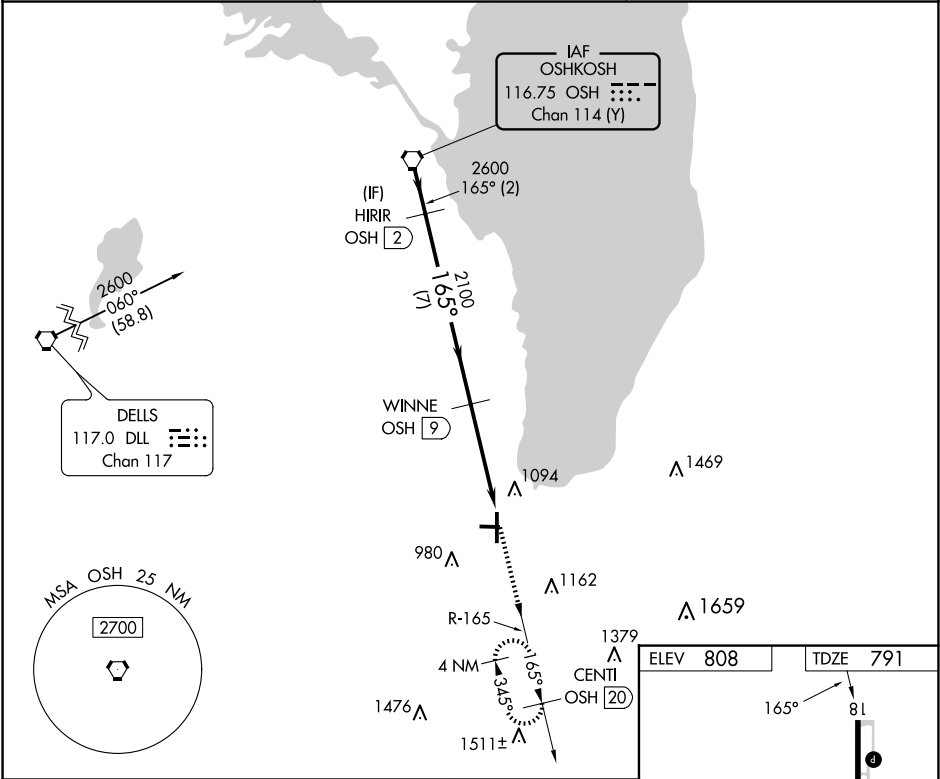
FOND DU LAC COUNTY (F.L.D)

⚠

Helicopter visibility reduction below ¾ SM NA. When local altimeter setting not received, use Oshkosh altimeter setting: increase all MDA 40 feet; increase S-18 Cat C/D visibility ½ mile, and increase Circling Cat C/D visibility ¼ mile. Night landing: Rwy 9, 27 NA. VDP NA when using Oshkosh altimeter setting. DME required.

MISSED APPROACH: Climb to 2600 on OSH VORTAC R-165 to CENTI/OSH 20 DME and hold.

ASOS	MILWAUKEE APP CON	UNICOM
134.0	127.0 263.075	123.05 (CTAF) 0



VGSI and descent angles not coincident (VGSI Angle 3.00/TCH 35).				
OSH VORTAC		HIRIR OSH 2	WINNE OSH 9	OSH 11.3 OSH 13
2600		2600	2100	2600
165°		165°	2.99° TCH 55	
2 NM		7 NM	2.3 NM	1.7 NM
CATEGORY	A	B	C	D
S-18	1360-1	569 (600-1)	1360-1½	569 (600-1½)
CIRCLING	1400-1	592 (600-1)	1520-2 712 (800-2)	1520-2¼ 712 (800-2¼)

