

RNAV (GPS) RWY 13

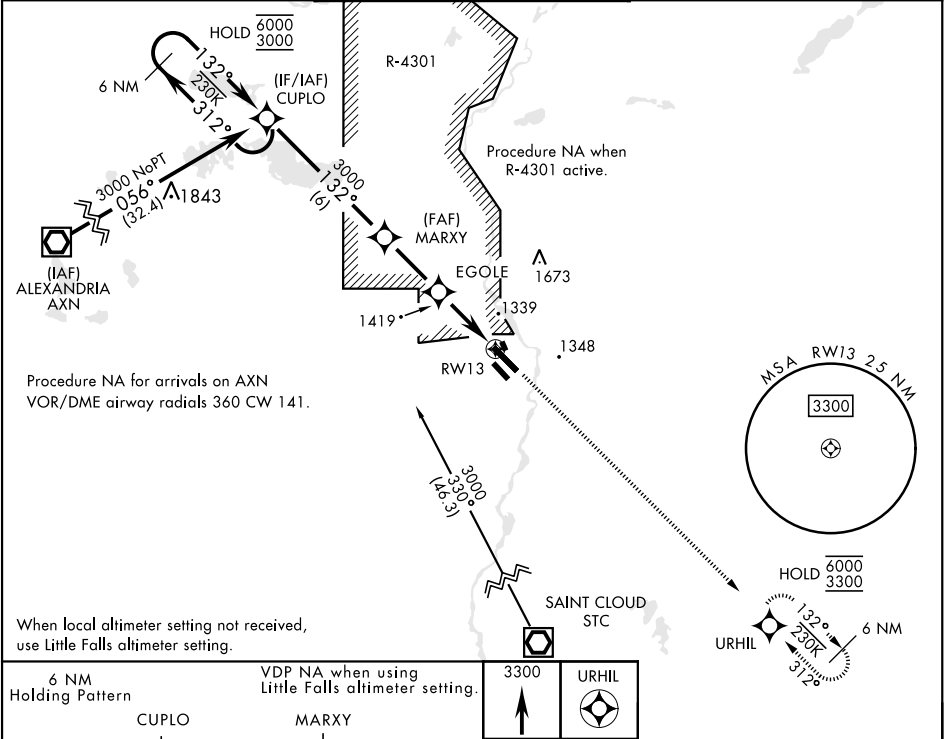
APCH CRS	Rwy Idg	6100
132°	TDZE	1150
	Arpt Elev	1150

[USA]

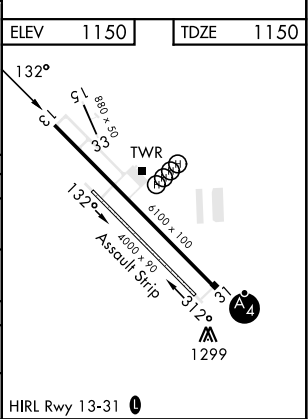
RAY S. MILLER AAF (KRYM)

RNP APCH-GPS	MISSED APPROACH: Climb to 3300 direct URHIL and hold.
RADAR required for procedure entry at STC VOR/DME.	
▼	

MINNEAPOLIS CENTER 118.05 239.0	MILLER TOWER ★ 126.2 254.4	CLNC DEL 126.2
------------------------------------	-------------------------------	-------------------



6 NM Holding Pattern					VDP NA when using Little Falls altimeter setting.				
CUPLO					MARXY				
6000 3000					3000				
312°					132°				
132°					3000				
2120					EGOLE				
2.8 NM					2.9 NM				
1.5 NM to RW13					RW13				
3.00° TCH 45					URHIL				
CATEGORY					A				
LNVA MDA					1680-1 530 (600-1)				
CIRCLING					1680-1 530 (600-1)				
LITTLE FALLS ALTIMETER SETTING					1720-1 570 (600-1)				
LNVA MDA					1720-1 570 (600-1)				
CIRCLING					1720-1 570 (600-1)				



RNAV (GPS) RWY 13

NC-1, 07 AUG 2025 to 04 SEP 2025

NC-1, 07 AUG 2025 to 04 SEP 2025