

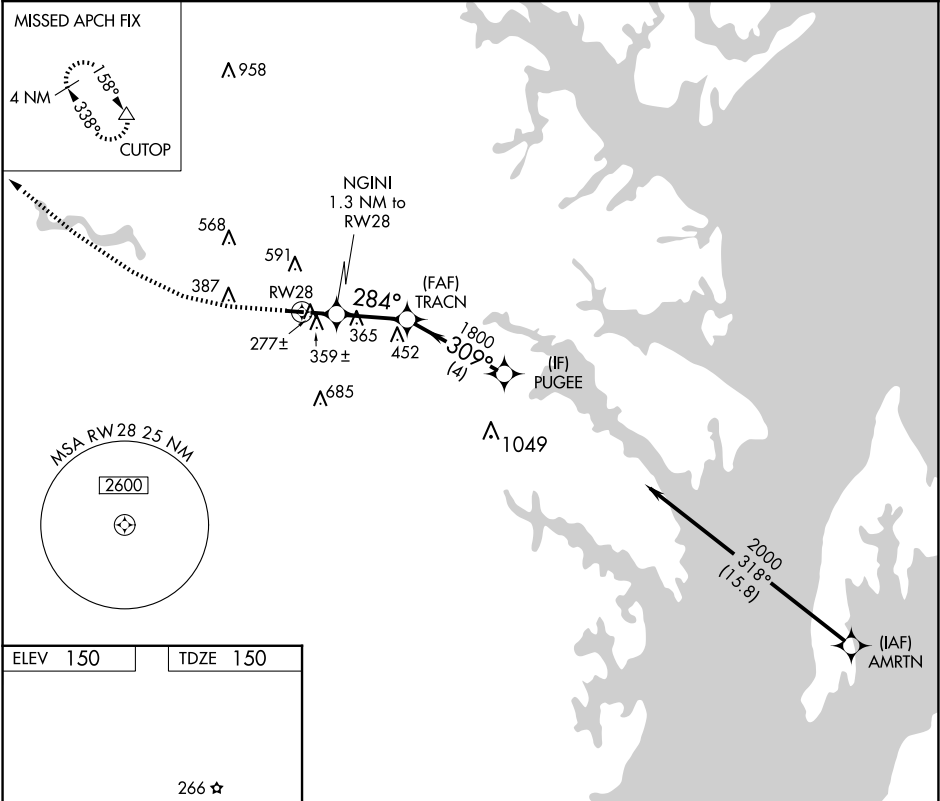
WAAS	APP CRS	Rwy Idg	3000
CH 56347	284°	TDZE	150
W28A		Apt Elev	150

RNAV (GPS) RWY 28

TIPTON (FME)

RNP APCH - GPS.	MISSED APPROACH: Climb to 570 then climbing right turn to 2000 direct CUTOP and hold.
▼ Rwy 28 helicopter visibility reduction below ¾ SM NA. Circling Rwy 10 NA at night.	
▲	

AWOS-3 123.925	POTOMAC APP CON 119.7 290.475	UNICOM 123.05 (CTAF) 0
-------------------	----------------------------------	---------------------------



ELEV 150	TDZE 150	570	2000	CUTOP	VGSI and descent angles not coincident (VGSI Angle 4.00/TCH 57).
REIL Rwy 10 and 28 0		MIRL Rwy 10-28 0			
FORT MEADE (ODENTON), MARYLAND		TIPTON (FME)			
Amdt 2 31OCT24		39°05'N-76°46'W			
RNAV (GPS) RWY 28		RNAV (GPS) RWY 28			