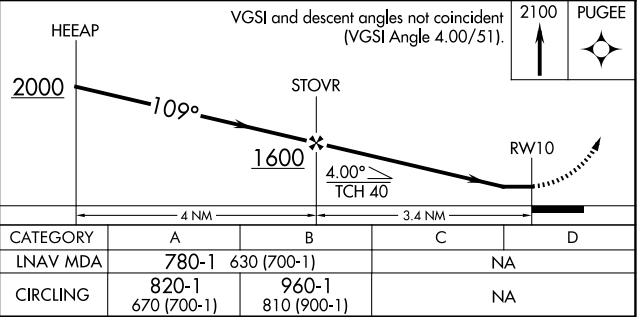
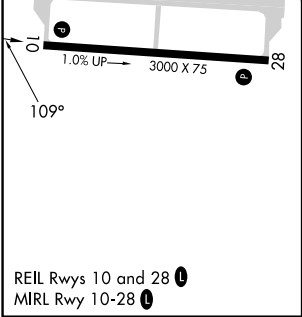
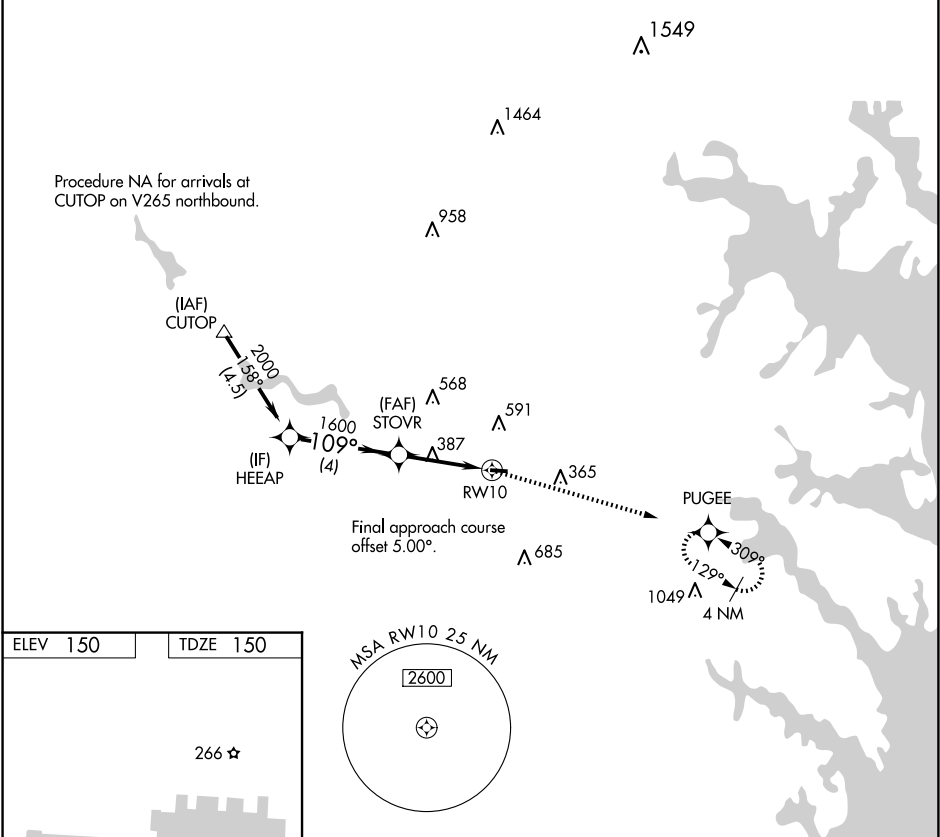


APP CRS 109°	Rwy Idg TDZE Apt Elev	3000 150 150	RNAV (GPS) RWY 10 TIPTON (FME)
------------------------	-----------------------------	---	-----------------------------------

RNP APCH - GPS.	MISSED APPROACH: Climb to 2100 direct PUGEE and hold.
<div><div>▼</div>Rwy 10 helicopter visibility reduction below 1 SM NA.</div> <div><div>▲</div>Straight-in Rwy 10 NA at night, Circling Rwy 10 NA at night.</div>	

AWOS-3 123.925	POTOMAC APP CON 119.7 290.475	UNICOM 123.05 (CTAF) 0
--------------------------	---	----------------------------------



NE-3, 07 AUG 2025 to 04 SEP 2025

NE-3, 07 AUG 2025 to 04 SEP 2025