

VORTAC BAL	BAL	Rwy Idg	6997
115.1	14.7	TDZE	22
Chan 98	Arc	Apt Elev	22

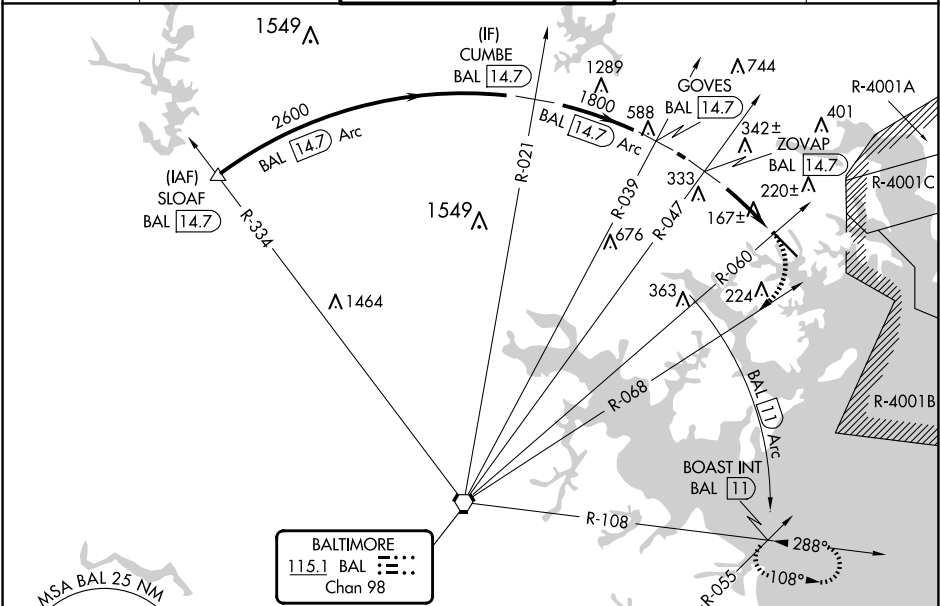
VOR or TACAN RWY 15
MARTIN STATE (MTN)

DME required.

▼ Rwy 15 helicopter visibility reduction below ¾ SM NA. When local altimeter setting not received, use Baltimore/Washington Intl Thurgood Marshall altimeter setting and increase all MDA 60 feet, and increase S-15 Cat B visibility ¼ SM, Cat C/D ½ SM and Circling Cats B/C ¼ SM. Circling NA northeast of Rwy 15-33.

⚠ MISSED APPROACH: Climbing right turn to 2500 on BAL VORTAC R-068 and BAL 11 DME Arc clockwise to BOAST INT/BAL 11 DME and hold.

ATIS 124.925	POTOMAC APP CON 119.0 282.275	MARTIN TOWER ★ 121.3(CTAF) 254.425	GND CON 121.8 253.4	UNICOM 122.95
-----------------	----------------------------------	---------------------------------------	------------------------	------------------



SLOAF BAL 14.7	CUMBE BAL 14.7	GOVES BAL 14.7	2500 BAL 11 Arc CW	BOAST INT
-------------------	-------------------	-------------------	--------------------------	-----------

2600 ← BAL 14.7 Arc → 2600

1800

1260

ZOVAP
BAL 14.7

BAL R-060 14.7

113.1 ADW Chan 78

BAL 14.7 Arc

TWR 98

6097' x 180'

Rwy 33 Idg 8100' (Military Operations only)
Rwy 15 take-off 8100' (Military Operations only)

HIRL Rwy 15-33
REIL Rws 15 and 33

CATEGORY	A	B	C	D
S-15	920-1¼ 898 (900-1¼)		920-2½ 898 (900-2½)	
CIRCLING	920-1¼ 898 (900-1¼)		920-2¾ 898 (900-2¾)	920-3 898 (900-3)

NE-3, 07 AUG 2025 to 04 SEP 2025

NE-3, 07 AUG 2025 to 04 SEP 2025