

WAAS CH 45622 W15A	APP CRS 146°	Rwy Idg 6997 TDZE 22 Apt Elev 22
--	------------------------	---

RNAV (GPS) RWY 15

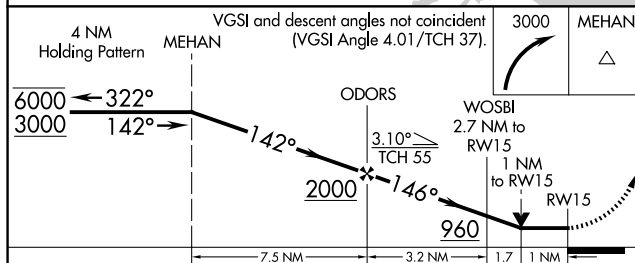
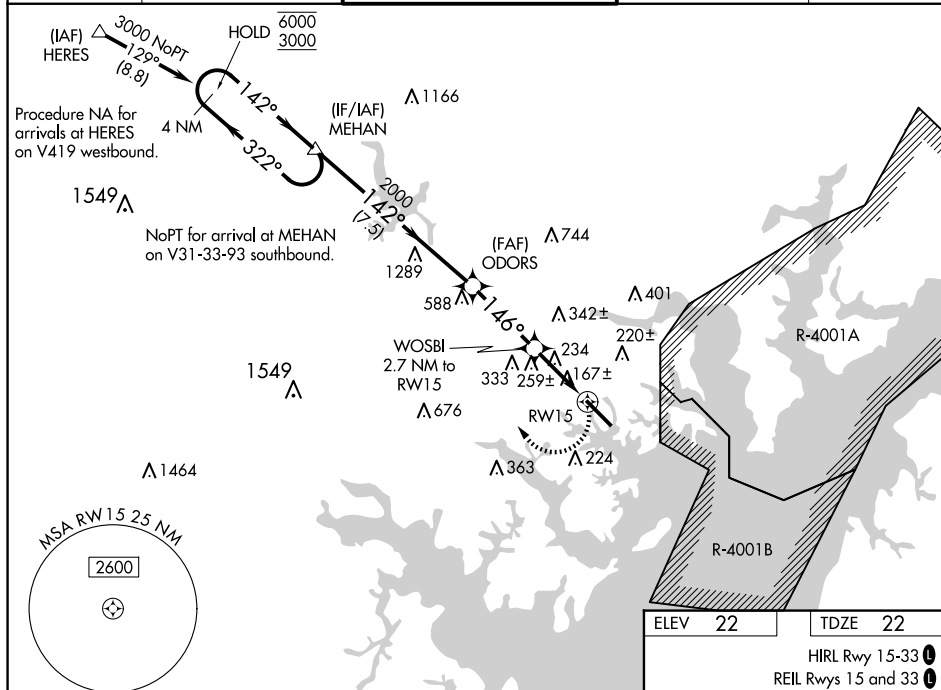
MARTIN STATE (MTN)

RNP APCH.

- T** Rwy 15 helicopter visibility reduction below ¼ SM NA. When local altimeter setting not received, use Baltimore/Washington Intl Thurgood Marshall altimeter setting; increase all MDA 60 feet and increase LP Cats C and D visibility ½ SM, LNAV Cats C and D visibility ¼ SM and Circling Cat C and D visibility ¼ SM. Circling Cat D NA northeast of Rwy 15-33.

MISSED APPROACH:
Climbing right turn to
3000 direct MEHAN
and hold.

ATIS 124.925	POTOMAC APP CON 119.0 282.275	MARTIN TOWER ★ 121.3(CTAF) 0 254.425	GND CON 121.8 253.4	UNICOM 122.95
-----------------	----------------------------------	---	------------------------	------------------



CATEGORY	A	B	C	D
LP MDA	500-1	478 (500-1)	500-1 $\frac{3}{8}$	478 (500-1 $\frac{3}{8}$)
LNAV MDA	520-1	498 (500-1)	520-1 $\frac{3}{8}$	498 (500-1 $\frac{3}{8}$)
CIRCLING	560-1	538 (600-1)	680-1 $\frac{3}{4}$ 658 (700-1 $\frac{3}{4}$)	740-2 $\frac{1}{4}$ 718 (800-2 $\frac{1}{4}$)

