

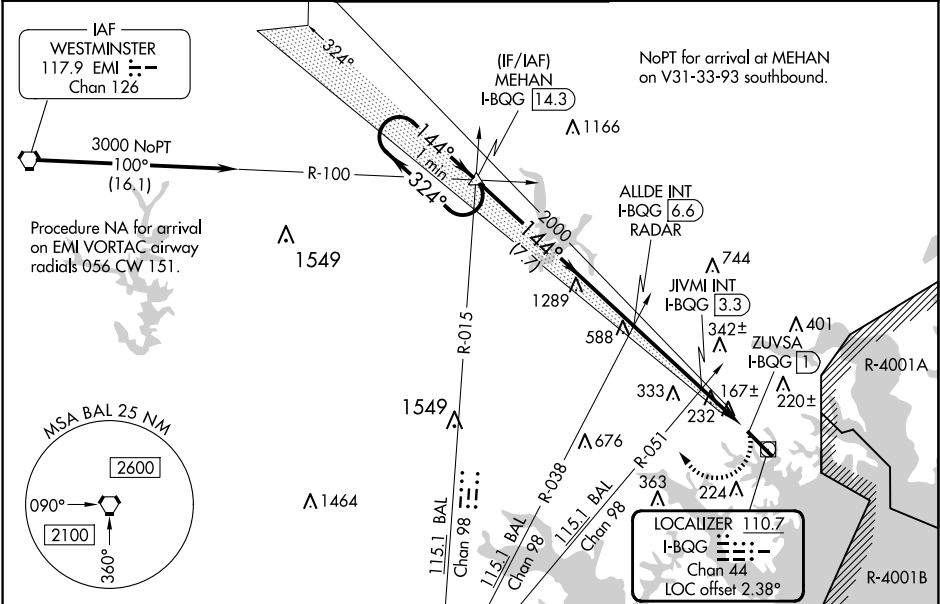
LOC/DME I-BQG <b>110.7</b> Chan <b>44</b>	APP CRS <b>144°</b>	Rwy Idg TDZE <b>22</b> Apt Elev <b>22</b>
---	------------------------	---

LOC RWY 15  
MARTIN STATE (MTN)

When local altimeter setting not received, use Baltimore/Washington Intl Thurgood Marshall altimeter setting; increase all MDA 60 feet and increase S-15 Cat A and Circling Cats C and D visibility ¼ SM and increase JIVMI fix minimums S-15 Cats C and D visibility ½ SM and Circling Cat C and D visibility ¼ SM. Rwy 15 helicopter visibility reduction below ¾ SM NA. Circling Cat D NA northeast of Rwy 15-33.

MISSED APPROACH: Climbing right turn to 3000 on heading 312° and BAL VORTAC R-015 to MEHAN INT/I-BQG 14.3 DME and hold.

ATIS <b>124.925</b>	POTOMAC APP CON <b>119.0 282.275</b>	MARTIN TOWER ★ <b>121.3(CTAF) 0 254.425</b>	GND CON <b>121.8 253.4</b>	UNICOM <b>122.95</b>
------------------------	---	--	-------------------------------	-------------------------



*920 when using Baltimore/Washington Intl Thurgood Marshall altimeter setting.				3000 hdg 312°	BAL R-015	MEHAN △	ELEV 22	TDZE 22
One Minute Holding Pattern				HIRL Rwy 15-33 REIL Rws 15 and 33				
Visual Segment - Obstacles.				TWR 98 6997 X 180				
MEHAN I-BQG 14.3				ALLDE INT I-BQG 6.6 RADAR	JIVMI INT I-BQG 3.3	ZUVSA I-BQG 1	Rwy 33 Idg 8100' (Military Operations Only)	
3000 ← 324° 144° → 2000				*860				Rwy 15 take-off 8100' (Military Operations Only)
7.7 NM				3.3 NM	1.3 NM	1 NM	FAF to MAP 5.6 NM	
CATEGORY	A		B		C		D	
S-15	860-1 838 (900-1)		860-1¼ 838 (900-1¼)		860-2½ 838 (900-2½)			
CIRCLING	860-1¼ 838 (900-1¼)				860-2¾ 838 (900-2¾)			
JIVMI FIX MINIMUMS (DUAL VOR RECEIVERS OR DME REQUIRED)								
S-15	500-1 478 (500-1)		500-1¾ 478 (500-1¾)					
CIRCLING	560-1 538 (600-1)		680-1¾ 658 (700-1¾)		740-2¼ 718 (800-2¼)			

NE-3, 07 AUG 2025 to 04 SEP 2025

NE-3, 07 AUG 2025 to 04 SEP 2025