

VORTAC BGQ	APP CRS	Rwy Idg	2450
112.5	096°	TDZE	162
Chan 72		Apt Elev	162

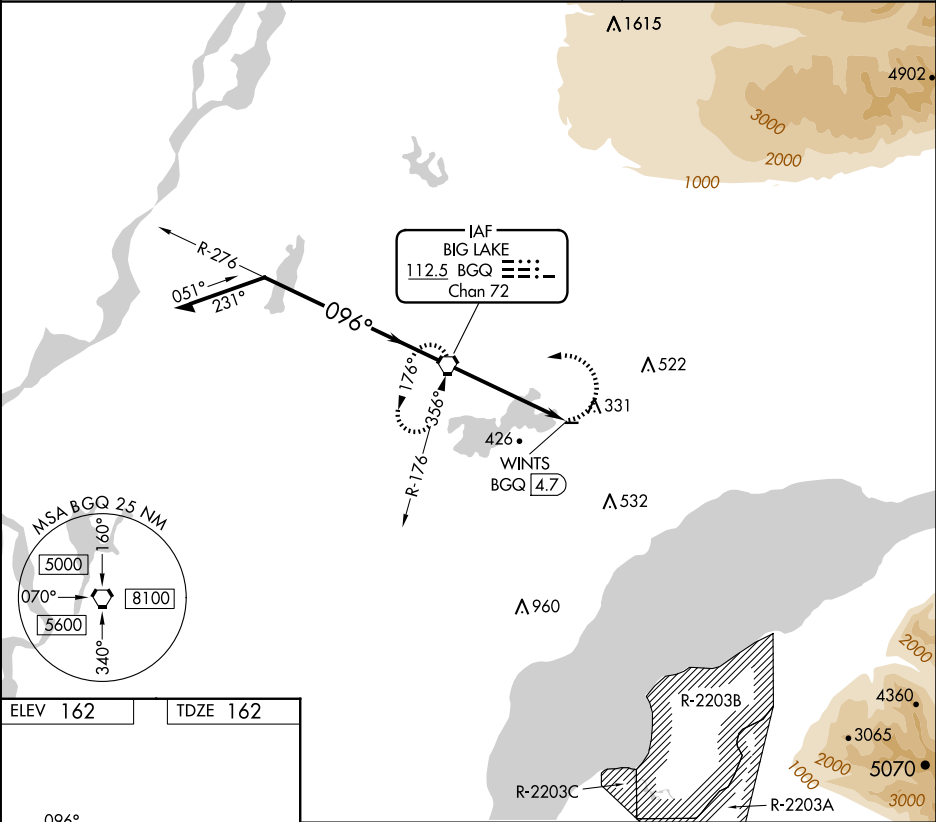
VOR RWY 7

BIG LAKE (BGQ) (PAGQ)

Procedure NA at night. Rwy 7 helicopter visibility reduction below 1 SM NA. Use Anchorage altimeter setting.

MISSED APPROACH: Climbing left turn to 2000 direct BGQ VORTAC and hold, climb-in-hold to 2000.

ANC ASOS	ANCHORAGE APP CON	CTAF
135.5	118.6	122.80



ELEV 162

TDZE 162

MIRL Rwy 7-25

FAF to MAP 4.7 NM

Knots	60	90	120	150	180
Min:Sec	4:42	3:08	2:21	1:53	1:34

Remain within 10 NM

BGQ VORTAC

2000

276°

096°

1700

3.05° TCH 40

WINTS BGQ 4.7

4.7 NM

CATEGORY	A	B	C	D
S-7	980-1 818 (900-1)	980-1¼ 818 (900-1¼)	980-2½ 818 (900-2½)	NA
<input checked="" type="checkbox"/> CIRCLING	980-1¼ 818 (900-1¼)	980-2½ 818 (900-2½)	980-2½ 818 (900-2½)	NA