

APP CRS

Rwy Idg

2450

075°

TDZE

162

Apt Elev

162

RNAV (GPS) RWY 7

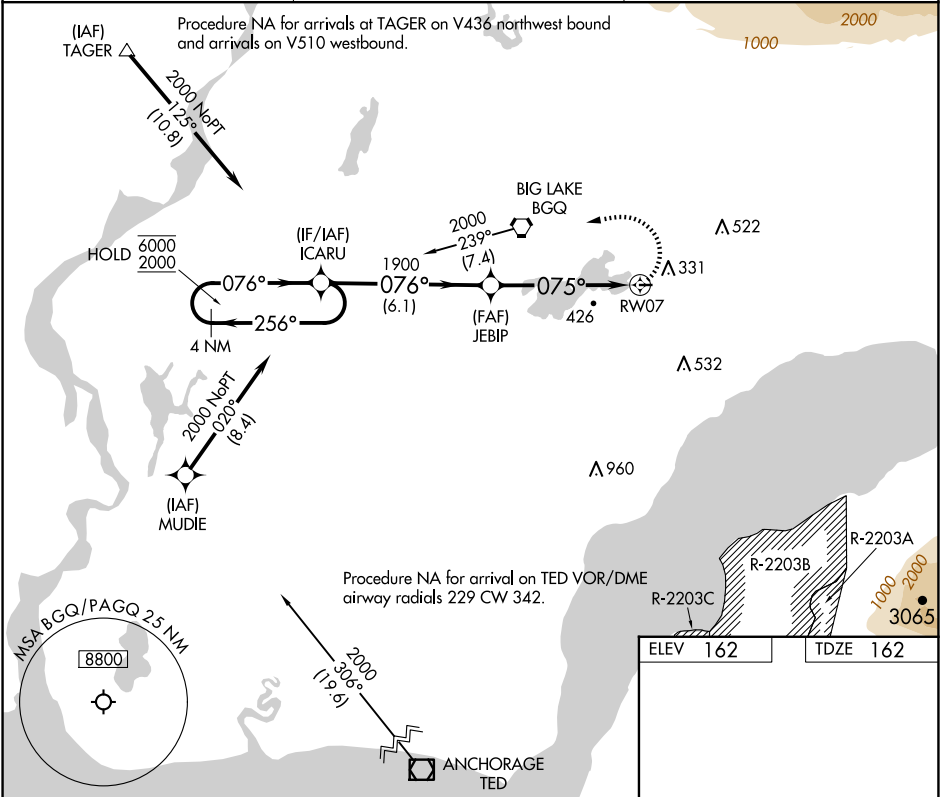
BIG LAKE (BGQ) (PAGQ)

RNP APCH.

Procedure NA at night. Rwy 7 helicopter visibility reduction below 1 SM NA. Use Anchorage altimeter setting.

MISSED APPROACH: Climbing left turn to 2000 direct ICARU and hold.

ANC ASOS	ANCHORAGE APP CON	CTAF
135.5	118.6	122.80



4 NM Holding Pattern

ICARU

JEBIP

RW07

6000 2000

256° 076°

076°

1900

075°

6.1 NM

5.3 NM

2000 ICARU

3.00° TCH 40

075°

2450 X 70

CATEGORY	A	B	C	D
LNAV MDA	940-1 778 (800-1)	940-1¼ 778 (800-1¼)	940-2½ 778 (800-2½)	NA
CIRCLING	940-1 778 (800-1)	960-1¼ 798 (800-1¼)	980-2½ 818 (900-2½)	NA

MIRL Rwy 7-25