

25107

APP CRS 255°	Rwy Idg TDZE Apt Elev	2450 162 162
------------------------	-----------------------------	---

RNAV (GPS) RWY 25

BIG LAKE (BGQ) (PAGQ)

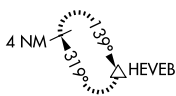
RNP APCH.

T Procedure NA at night. Rwy 25 helicopter visibility reduction
A NA below 1 SM NA. Use Anchorage altimeter setting.

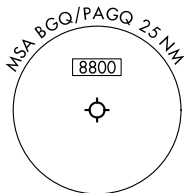
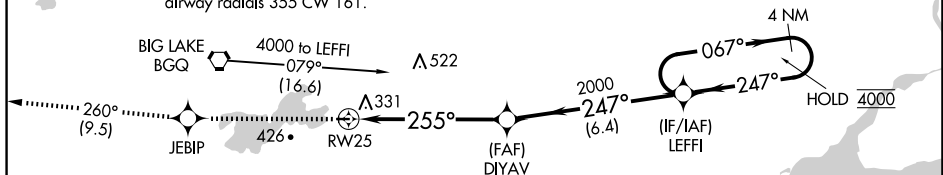
MISSED APPROACH: Climb to 3000 direct JEBIP and on track 260° to HEVEB and hold.

ANC ASOS 135.5	ANCHORAGE APP CON 118.6	CTAF 122.80
--------------------------	-----------------------------------	-----------------------

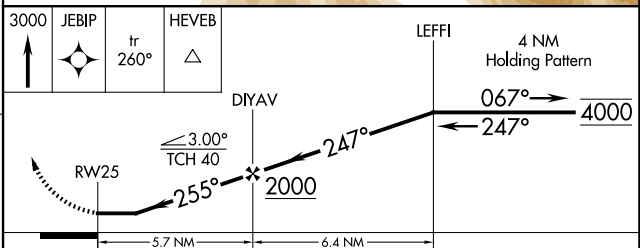
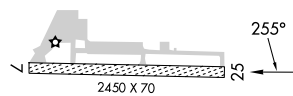
MISSED APCH FIX




Procedure NA for arrival on BGQ VORTAC
airway radials 355 CW 161.



ELEV 162		TDZE 162
----------	--	----------



CATEGORY	A	B	C	D
LNAV MDA	1020-1 858 (900-1)	1020-1¼ 858 (900-1¼)	1020-2½ 858 (900-2½)	NA
 CIRCLING	1020-1¼ 858 (900-1¼)		1020-2½ 858 (900-2½)	NA

BIG LAKE, ALASKA
Amdt 2 17JUN21

61°32'N-149°49'W

BIG LAKE (BGQ) (PAGQ)
RNAV (GPS) RWY 25

AK, 07 AUG 2025 to 02 OCT 2025