

LOC I-POC 110.5	APP CRS 259°	Rwy Ldg TDZE Apt Elev 4151 1005 1014	ILS RWY 26L BRACKETT FLD (POC)	
---------------------------	------------------------	--	-----------------------------------	--

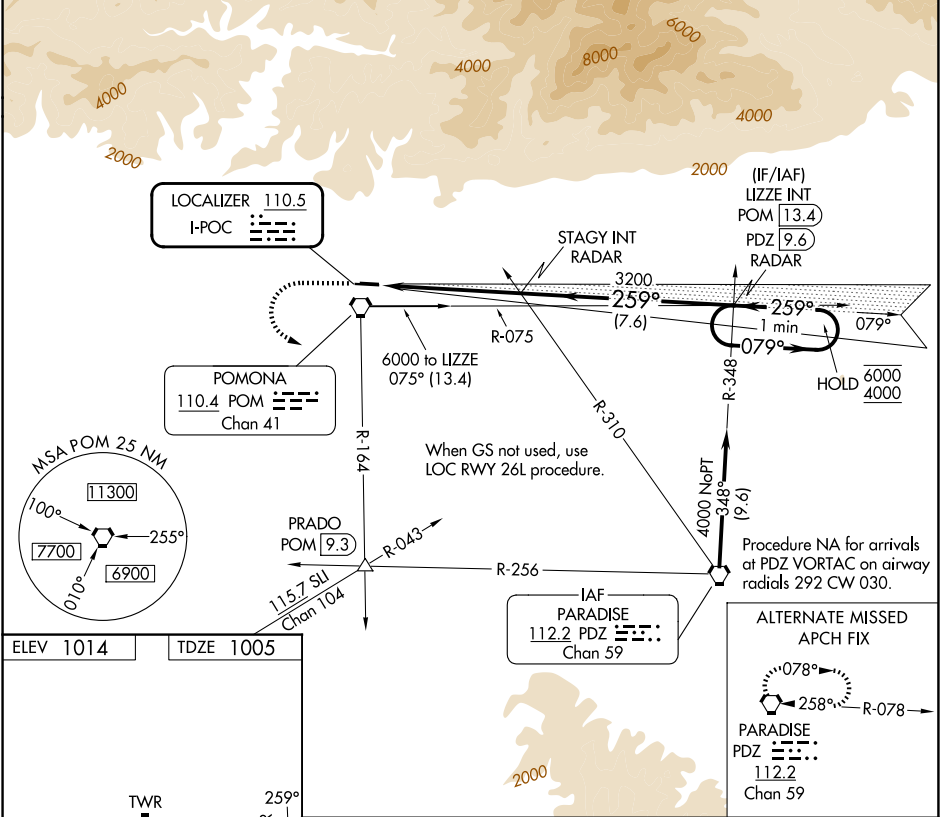
- ▼

Rwy 26L helicopter visibility reduction below ¾ SM NA.

▲

When local altimeter setting not received, use Ontario Intl altimeter setting and increase DA to 1364.
- MISSED APPROACH: Climb to 2100 then climbing left turn to 4000 on POM VORTAC R-164 to PRADO INT/POM 9.3 DME.

D-ATIS 124.4	SOCAL APP CON 125.5 349.0	BRACKETT TOWER★ 118.2 (CTAF) (8R/26L) 133.3 (8L/26R)	GND CON 125.0	CLNC DEL 121.875	UNICOM 122.95
------------------------	-------------------------------------	--	-------------------------	----------------------------	-------------------------



ELEV 1014	TDZE 1005	REIL Rws 8R and 26L MIRL Rwy 8R-26L			
TWR 1.0% UP → 3661 X 75 0.9% UP → 4840 X 75		2100 ↑	4000 POM R-164	PRADO △	VGSi and ILS glidepath not coincident (VGSi Angle 3.76/TCH 18).
26L 259°		STAGY INT RADAR 3200		LIZZE INT PDZ 9.6 RADAR	One Minute Holding Pattern
5.2 NM		7.6 NM		*at DTHR; 60 at Rwy end. GS 3.92° *TCH 20	
CATEGORY	A	B	C	D	
S-ILS 26L	1332-1	327 (400-1)	NA		