

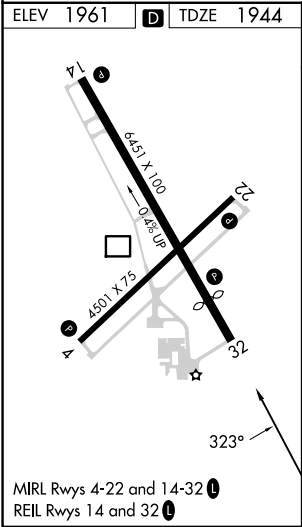
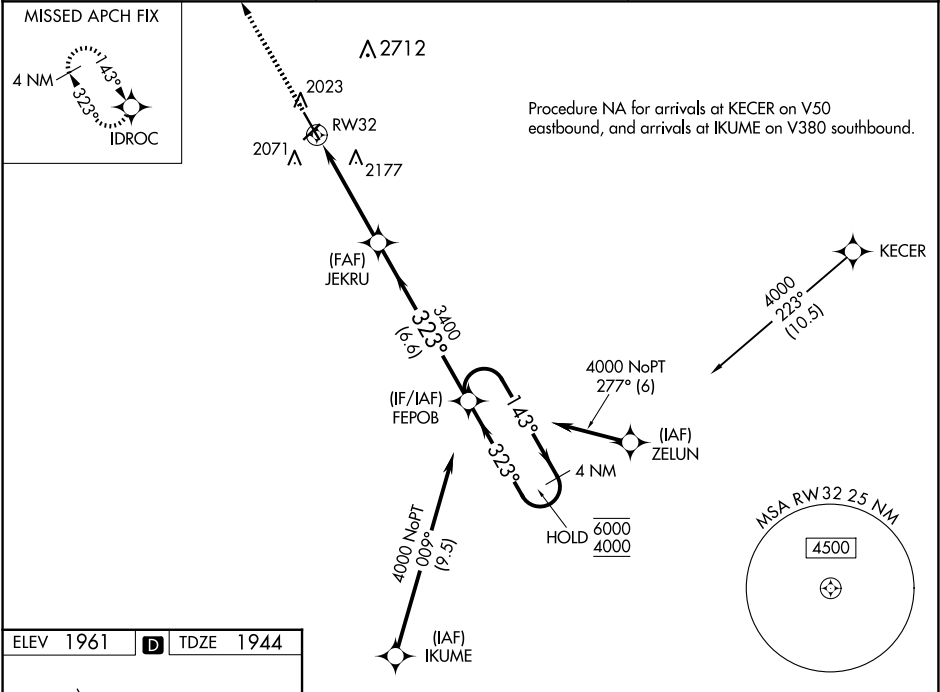
WAAS CH 63223 W32A	APP CRS 323°	Rwy Idg TDZE 1944 Apt Elev 1961
--	------------------------	---

RNAV (GPS) RWY 32

HASTINGS MUNI (HSI)

RNP APCH.	MISSED APPROACH: Climb to 4000 direct IDROC and hold.
For uncompensated Baro-VNAV systems, LNAV/VNAV NA below -18°C or above 54°C. Circling NA for Cat D east of Rwy 14-32.	

ASOS 120.525	MINNEAPOLIS CENTER 119.4 278.8	UNICOM 122.8 (CTAF) 0
------------------------	--	---------------------------------



4000

↑

IDROC

FEPOB

4 NM Holding Pattern

* LNAV only.

* 1.3 NM to RW32

RW32

JEKRU

3400

323°

143°

323°

6000

4000

GP 3.00°

TCH 42

1.3 NM

3.2 NM

6.6 NM

CATEGORY	A	B	C	D
LPV DA	2194-7⁄8		250 (300-7⁄8)	
LNAV/VNAV DA	2386-13⁄8		442 (500-13⁄8)	
LNAV MDA	2380-1 436 (500-1)		2380-1¼ 436 (500-1¼)	
CIRCLING	2380-1 419 (500-1)	2540-1 579 (600-1)	2540-1½ 579 (600-1½)	2540-2 579 (600-2)