

|  |                        |   |
|--|------------------------|---|
| WAAS<br>CH <b>65612</b><br><b>W14A</b> | APP CRS<br><b>143°</b> | Rwy Idg <b>5500</b><br>TDZE <b>1961</b><br>Apt Elev <b>1961</b> |
|--|------------------------|---|

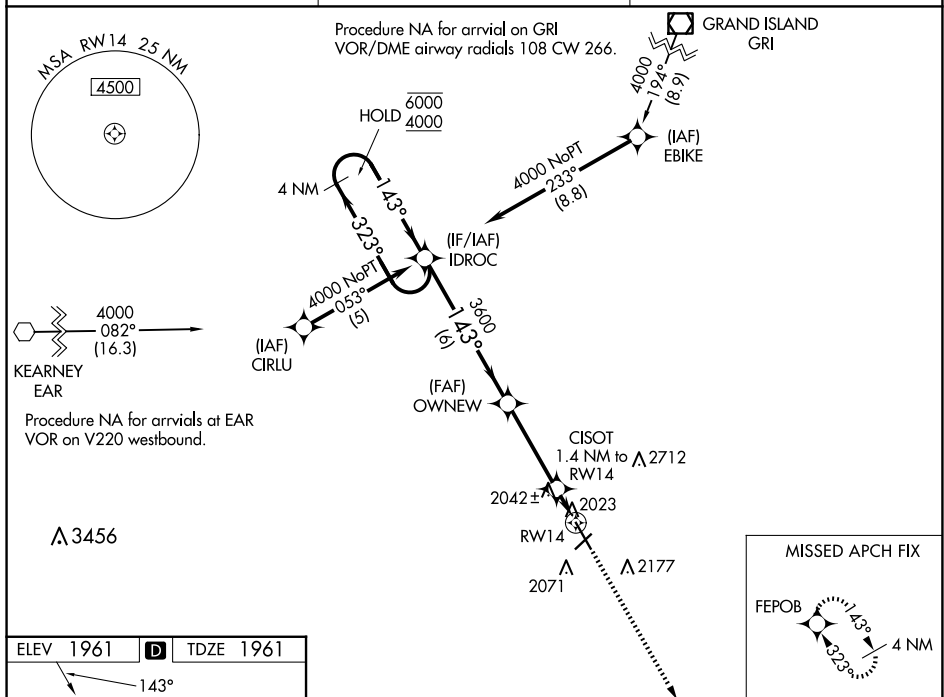
RNAV (GPS) RWY 14  
HASTINGS MUNI (HSI)

RNP APCH.

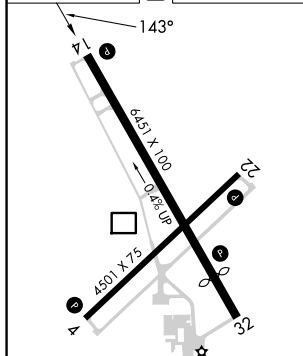
**T** Rwy 14 helicopter visibility reduction below  $\frac{3}{4}$  SM NA. For uncompensated Baro-VNAV systems, procedure NA below -18°C or above 54°C. Circling NA for Cat D east of Rwy 14-32.

**MISSED APPROACH:** Climb to 4000 direct FEPOB and hold.

|                        |  |  |
|------------------------|--|--|
| ASOS<br><b>120.525</b> | MINNEAPOLIS CENTER<br><b>119.4 278.8</b> | UNICOM<br><b>122.8</b> (CTAF) <b>0</b> |
|------------------------|--|--|



|           |          |           |
|-----------|----------|-----------|
| ELEV 1961 | <b>D</b> | TDZE 1961 |
|-----------|----------|-----------|

MIRL Rwyys 4-22 and 14-32 **L**REIL Rwys 14 and 32 **L**

HASTINGS, NEBRASKA

Orig-D 18JUN20

40°36'N-98°26'W

HASTINGS MUNI (HST)

RNAV (GPS) RWY 14

NC-2, 07 AUG 2025 to 04 SEP 2025

[illegible]