

WAAS  
CH **82716**  
**W12A**

APP CRS  
**118°**

Rwy Ldg  
TDZE **918**  
Apt Elev **918**

RNAV (GPS) RWY 12

APPLETON INTL (ATW)

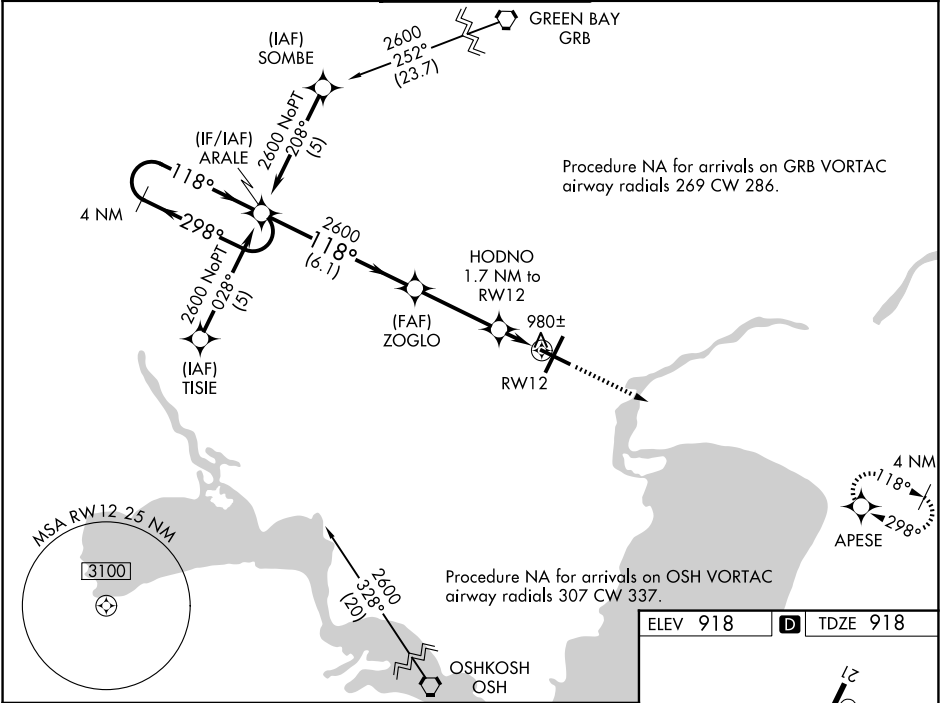
▼

▲

For uncompensated Baro-VNAV systems, LNAV/VNAV NA below -16°C (4°F) or above 47°C (116°F). DME/DME RNP-0.3 NA. When local altimeter not received, use Green Bay-Austin Straubel Intl altimeter setting and increase all DA 81 feet and all MDA 100 feet. Increase LPV and LNAV/VNAV all Cats and LNAV Cat C/D visibility ½ mile. Baro-VNAV and VDP NA when using Green Bay-Austin Straubel altimeter setting.

MISSED APPROACH:  
Climb to 2700 direct APESE and hold.

ATIS <b>127.15</b>	GREEN BAY APP CON★ <b>126.3 338.2</b>	APPLETON TOWER★ <b>119.6 (CTAF) 0</b>	GND CON <b>121.7</b>	UNICOM <b>122.95</b>
-----------------------	--	--	-------------------------	-------------------------



4 NM Holding Pattern

VGSI and RNAV glidepath not coincident (VGSI Angle 3.00/TCH 35).

2700 APESE

GP 3.00° TCH 50

ARALE

ZOGLO

HODNO 1.7 NM to RW12

\*0.9 NM to RW12

\*1500

\*0.9 NM to RW12

\*1500

6.1 NM

3.4 NM

0.8

0.9

CATEGORY	A	B	C	D
LPV DA		1118-¾	200 (200-¾)	
LNAV/ VNAV DA		1329-1½	411 (500-1½)	
LNAV MDA		1240-1	322 (400-1)	
CIRCLING	1340-1 422 (500-1)	1380-1 462 (500-1)	1400-1½ 482 (500-1½)	1480-2 562 (600-2)

ELEV 918

TDZE 918

REIL Rwy 12 and 21

HIRL Rwy 12-30 and 3-21