

24305

# RNAV (GPS) RWY 20

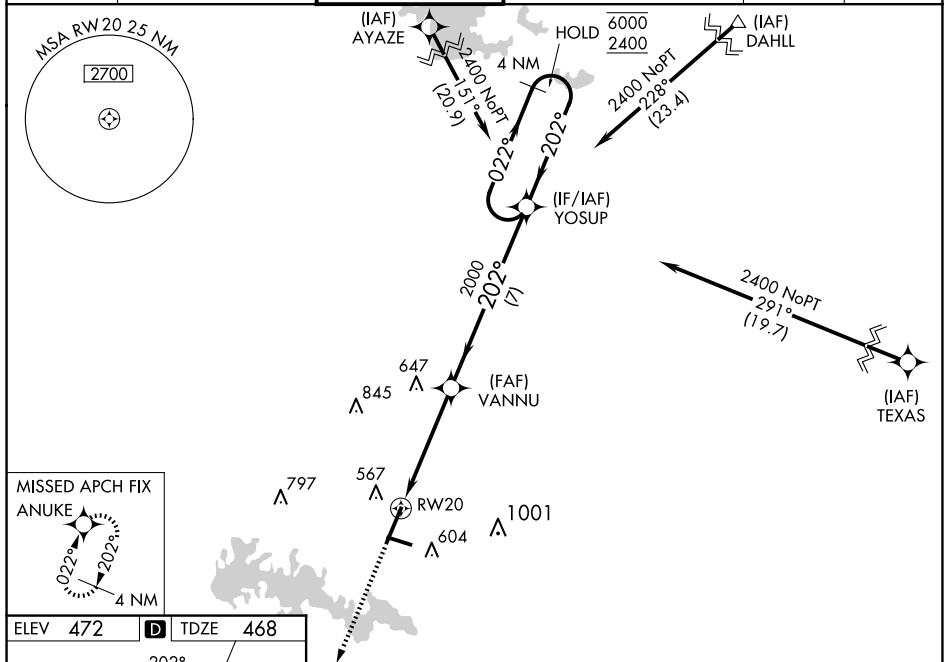
## VETERANS AIRPORT OF SOUTHERN ILLINOIS (MWA)

**T** Circling Rwy 11 NA at night. For uncompensated Baro-VNAV systems, LNAV/VNAV NA below -15° C or above 54°C. For inop ALS, increase LNAV/VNAV all Cats visibility to ¾ SM and LNAV Cats C/D visibility to 1 ½ SM.



**MISSED APPROACH:**  
Climb to 2400 direct  
ANUKE and hold.

AWOS-3P <b>119.675</b>	KANSAS CITY CENTER <b>127.475 346.275</b>	MARION TOWER ★ <b>128.4 (CTAF) 0</b>	CLNC DEL <b>127.475 (When twr closed)</b>	GND CON <b>121.7</b>	UNICOM <b>122.95</b>
---------------------------	----------------------------------------------	-----------------------------------------	----------------------------------------------	-------------------------	-------------------------



ELEV 472 [D] TDZE 468

202°

06

A5

8012 X 130

0.3% UP

4997 X 100

TWR 542

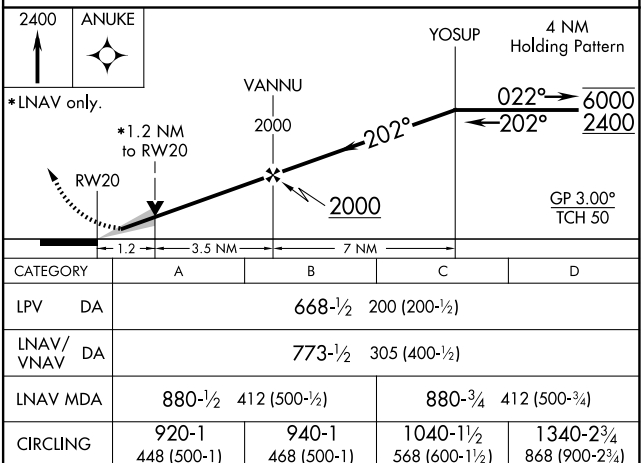
520

REIL Rwy 2

REIL Rwys 11 and 29

HIRL Rwy 2-20

MIRL Rwy 11-29



VETERANS AIRPORT OF SOUTHERN ILLINOIS (MWA)  
37°45'N-89°01'W **RNAV (GPS) RWY 20**