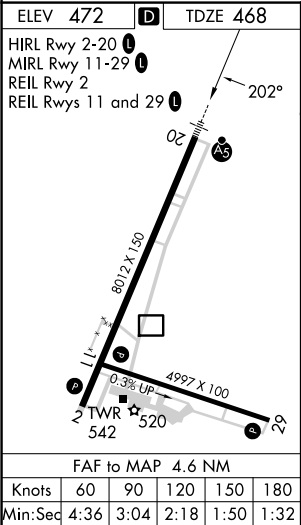
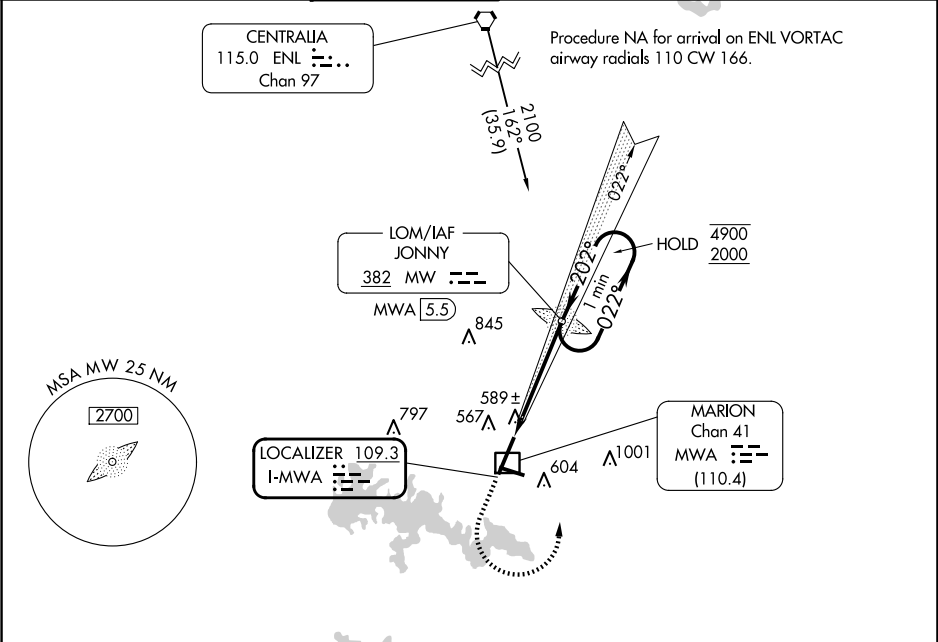


LOC I-MWA <b>109.3</b>	APP CRS <b>202°</b>	Rwy Idg <b>8012</b> TDZE <b>468</b> Apt Elev <b>472</b>
---------------------------	------------------------	---

ILS or LOC RWY 20

VETERANS AIRPORT OF SOUTHERN ILLINOIS(MWA)

DME required. ADF required.		MALSR	MISSED APPROACH: Climb to 1500 then climbing left turn to 2000 direct JONNY LOM/MWA 5.5 DME and hold.		
▼ Circling Rwy 11 NA at night. For inop ALS, increase S-LOC 20 ▲ Cat C/D visibilities to 1 SM.					
AWOS-3P <b>119.675</b>	KANSAS CITY CENTER <b>127.475 346.275</b>	MARION TOWER★ <b>128.4 (CTAF) 0</b>	CLNC DEL <b>127.475</b> (When twr closed)	GND CON <b>121.7</b>	UNICOM <b>122.95</b>



1500 2000 MW			
MW LOM MWA 5.5			
One Minute Holding Pattern			
* LOC only. * MWA 1.9			
1990 022° 4900 2000 GS 3.00° TCH 50			
1 NM 3.6 NM			
CATEGORY	A	B	C D
S-ILS 20	668- ½		200 (200-½)
S-LOC 20	840- ½	372 (400-½)	840- ⅝ 372 (400- ⅝)
CIRCLING	920-1 448 (500-1)	940-1 468 (500-1)	1040-1½ 568 (600-1½) 1340-2¾ 868 (900-2¾)

EC-3, 07 AUG 2025 to 04 SEP 2025

EC-3, 07 AUG 2025 to 04 SEP 2025