

WAAS
CH **50428**
W21A

APP CRS
210°

Rwy Ldg
TDZE **764**
Apt Elev **764**

5792
764
764

RNAV (GPS) RWY 21

HARREL W TIMMONS GALESBURG RGNL (GBG)

RNP APCH - GPS.

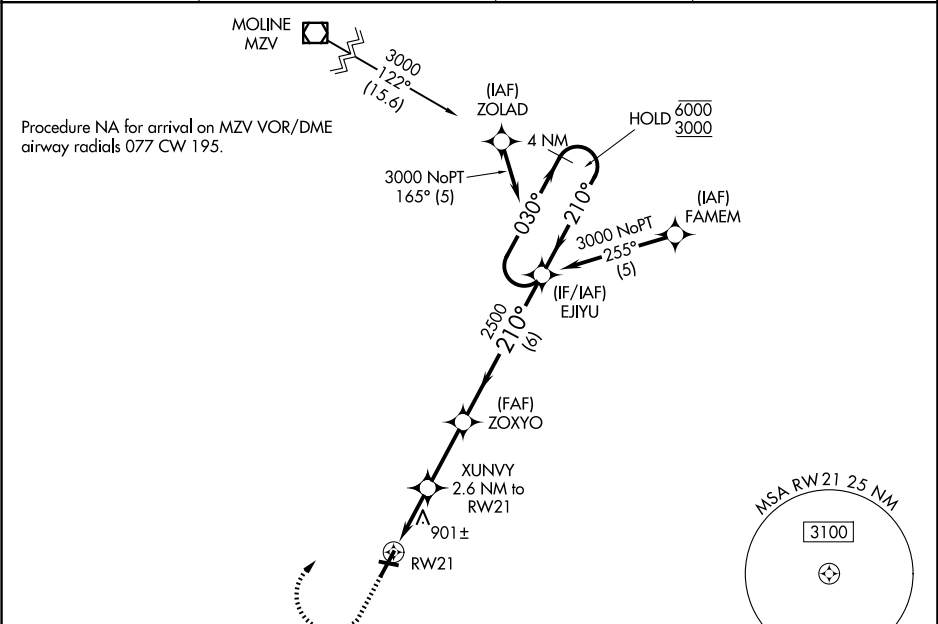
▼

▲

For uncompensated Baro-VNAV systems, LNAV/VNAV NA below -16°C or above 54°C.

MISSED APPROACH: Climb to 1700 then climbing right turn to 3000 direct EJYU and hold.

AWOS-3 118.975	QUAD CITY APP CON ★ 133.275 257.8	CLNC DEL 120.7	UNICOM 123.0 (CTAF) 0
--------------------------	---	--------------------------	--



ELEV 764

TDZE 764

210°

843

21

10

3600 X 100

5792 X 150

REIL Rwy 21 **0**

HIRL Rwy 3-21 **0**

MIRL Rwy 10-28 **0**

1700

3000

EJYU

XUNVY 2.6 NM to RW21

ZOXYO

EJYU

4 NM Holding Pattern

030°

210°

6000

3000

GP 3.00°

TCH 55

1640

2500

2500

1.1 NM to RW21

1.1

1.5

2.7 NM

6 NM

CATEGORY	A	B	C	D
LPV DA	964- ³ / ₄		200 (200- ³ / ₄)	
LNAV/VNAV DA	1155-1 ¹ / ₈		391 (400-1 ¹ / ₈)	
LNAV MDA	1160-1	396 (400-1)	1160-1 ¹ / ₈	396 (400-1 ¹ / ₈)
CIRCLING	1220-1	456 (500-1)	1380-1 ³ / ₄ 616 (700-1 ³ / ₄)	1620-2 ³ / ₄ 856 (900-2 ³ / ₄)

EC-3, 07 AUG 2025 to 04 SEP 2025

EC-3, 07 AUG 2025 to 04 SEP 2025