

IRONWOOD, MICHIGAN

AL-5213 (FAA)

25163

VOR/DME IWD 108.8 Chan 25	APP CRS 079°	Rwy Ldg 6501 TDZE 1230 Apt Elev 1230
---	------------------------	---

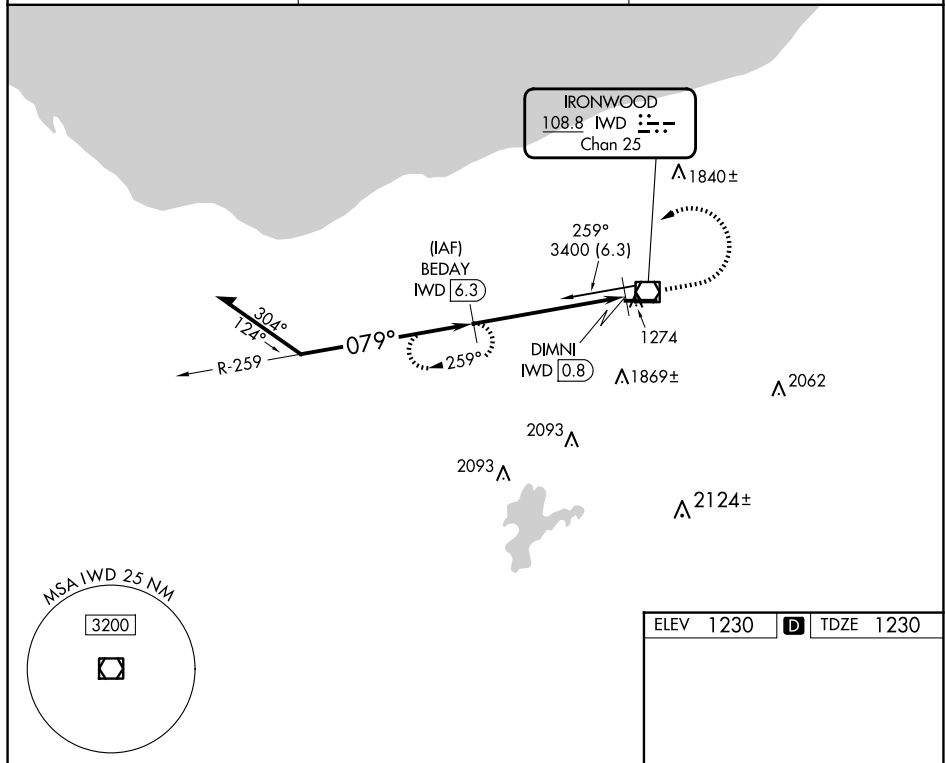
VOR RWY 9
GOGEBIC/IRON COUNTY (IWD)

DME required.

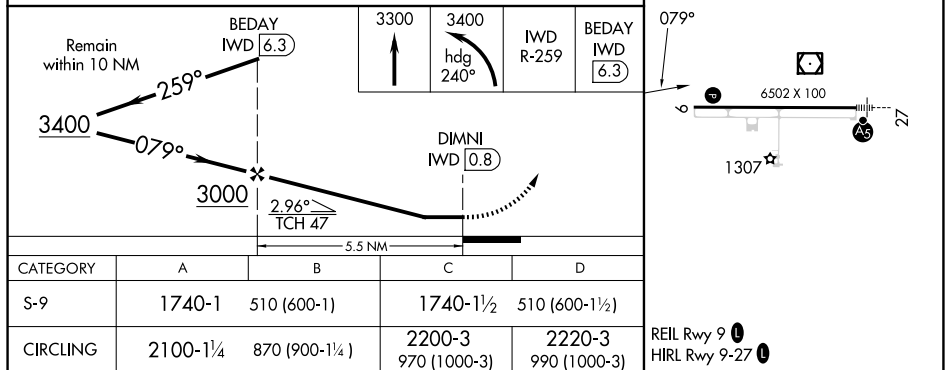
T Rwy 9 helicopter visibility reduction below $\frac{3}{4}$ SM NA. When local altimeter setting not received, use ASX altimeter setting: increase all MDAs 140 feet and S-9 visibility Cat C $\frac{1}{4}$ SM and Cat D $\frac{1}{2}$ SM, and Circling visibility Cat B $\frac{1}{4}$ SM.

MISSED APPROACH: Climb to 3300 then climbing left turn to 3400 on heading 240° and IWD R-259 to BEDAY/6.3 DME and hold.

AWOS-3PT 125.175	MINNEAPOLIS CENTER 133.55	UNICOM 122.8 (CTAF) 0
----------------------------	-------------------------------------	---------------------------------



ELEV	1230	D	TDZE	1230
------	------	----------	------	------



CATEGORY	A	B	C	D
S-9	1740-1	510 (600-1)	1740-1½	510 (600-1½)
CIRCLING	2100-1¼	870 (900-1¼)	2200-3 970 (1000-3)	2220-3 990 (1000-3)

REIL Rwy 9 **L**
HIRL Rwy 9-27 **L**

IRONWOOD, MICHIGAN

Amdt 13C 26DEC24

GOGEBIC/IRON COUNTY (IWD)

46°32'N-90°08'W

VOR RWY 9