


WAAS CH 50212 W27A	APP CRS 270°	Rwy Ldg 6501 TDZE 1230 Apt Elev 1230
--	------------------------	---

RNAV (GPS) RWY 27

GOGEBIC/IRON COUNTY (IWD)

RNP APCH - GPS.

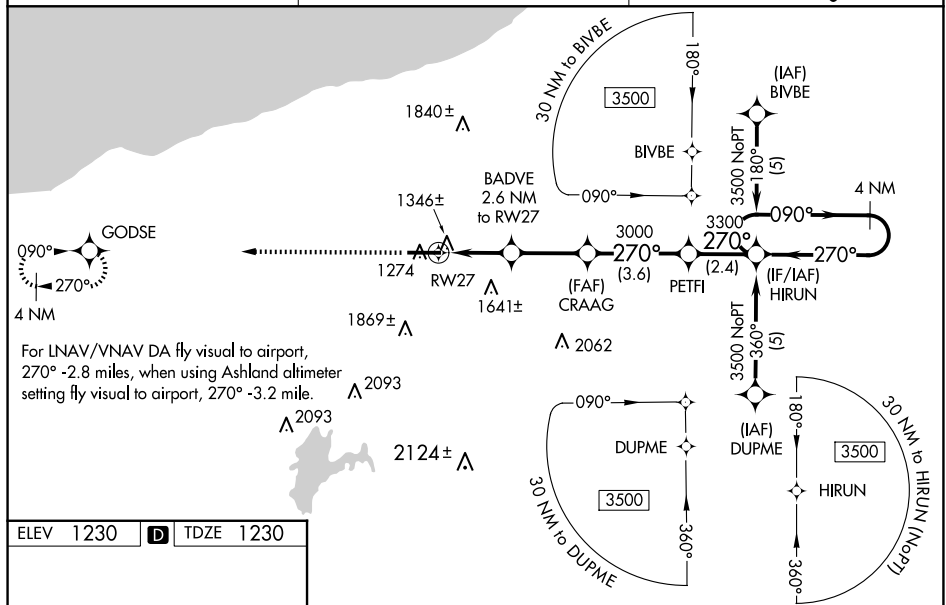
 Inoperative table does not apply to LPV and LNAV/VNAV all Cats and LNAV Cats A and B. For uncompensated Baro-VNAV systems, LNAV/VNAV NA below -17°C or above 46°C. When using Ashland altimeter setting: inop table does not apply to LNAV/VNAV all Cats and LNAV Cat A. When using Ashland altimeter setting: for inoperative MALSR, increase LNAV Cat B visibility to 1 1/4 mi. Baro-VNAV and VDP NA when using Ashland altimeter setting. When local altimeter setting not received, use Ashland altimeter setting: increase LPV DA to 1562 feet; increase LNAV/VNAV DA to 2298 feet and Cat C visibility 1/4 SM; increase all MDA 140 feet and LNAV Cat C/D visibility 1/2 SM and Circling Cat B visibility 1/4 SM.

MALSR



MISSED APPROACH:
Climb to 3500 direct
GODSE and hold.

AWOS-3PT	MINNEAPOLIS CENTER	UNICOM
125.175	133.55	122.8 (CTAF) 0



REIL Rwy 9 **1**
HIRL Rwy 9-27 **1**