

LOC I-IWD
111.5

APP CRS
270°

Rwy Ldg
TDZE **1230**
Apt Elev **1230**

ILS or LOC RWY 27

GOGEBIC/IRON COUNTY (IWD)

▼

NA

⚠ -26°C

When local altimeter setting not received, use ASX altimeter setting: increase DA to 1562 feet; increase all MDAs 140 feet and S-LOC 27 visibility Cats C and D ½ SM and Circling visibility Cat B ¼ SM. For inop ALS when using ASX altimeter setting, increase S-ILS 27 all Cats visibility to 1 SM.

MALSR

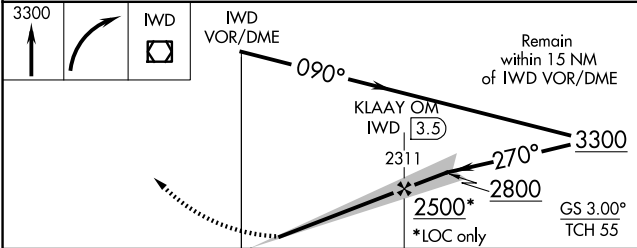
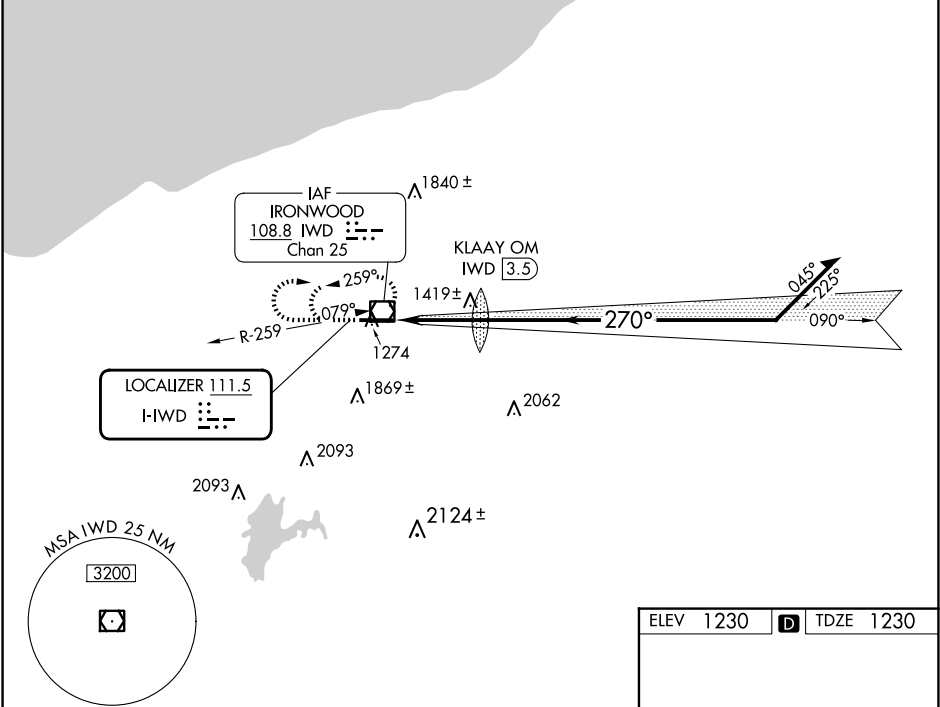
AS

MISSED APPROACH:
Climb to 3300 then right turn direct IWD VOR/DME and hold.

AWOS-3PT
125.175

MINNEAPOLIS CENTER
133.55

UNICOM
122.8 (CTAF)



CATEGORY	A	B	C	D
S-ILS 27		1430-½	200 (200-½)	
S-LOC 27	1720-½	490 (500-½)	1720-1	490 (500-1)
CIRCLING	2100-1¼	870 (900-1¼)	2200-3 970 (1000-3)	2220-3 990 (1000-3)

ELEV 1230 D TDZE 1230

Diagram showing the final approach segment with altitudes and distances:

- 6502 X 100
- 1307
- 270°

REIL Rwy 9
HIRL Rwy 9-27

FAF to MAP 3.2 NM

Knots	60	90	120	150	180
Min:Sec	3:12	2:08	1:36	1:17	1:04

EC-1, 07 AUG 2025 to 04 SEP 2025

EC-1, 07 AUG 2025 to 04 SEP 2025