

RNAV (GPS) RWY 14

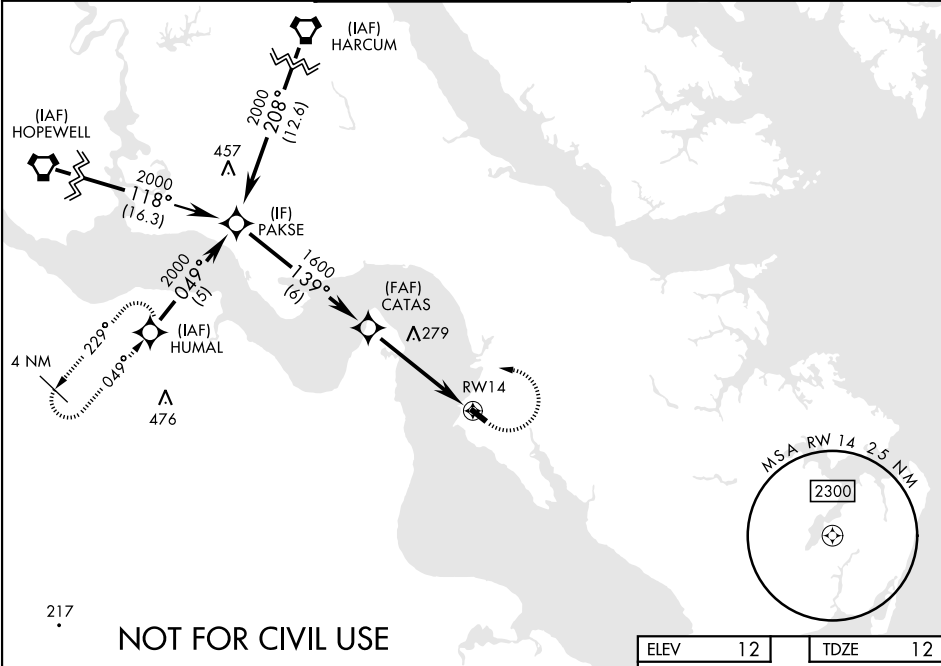
|          |           |      |
|----------|-----------|------|
| APCH CRS | Rwy Idg   | 3025 |
| 139°     | TDZE      | 12   |
|          | Arpt Elev | 12   |

[USA]

FELKER AAF (KFAF)

|  |       |  |
|--|-------|--|
| RNP APCH - GPS   | ODALS | MISSED APPROACH: Climbing left turn to 2000 direct HUMAL and hold. |
| Procedure NA at night.<br>When local altimeter setting not received, use Newport News/Williamsburg Intl altimeter setting. Rwy 14 helicopter visibility reduction below 1 SM NA. |       |  |

|                 |                       |              |
|-----------------|-----------------------|--------------|
| NORFOLK APP CON | TOWER ★               | GND CON      |
| 125.7 335.625   | 126.3 (CTAF) 0 269.25 | 121.35 229.4 |



|  |             |             |    |        |       |
|--|-------------|-------------|----|--------|-------|
| VGSi and Descent Angle not coincident (VGSi Angle 3.00/TCH 48) |             |             |    | 2000   | HUMAL |
| PAKSE  |             |             |    | 2000   |       |
| CATAS  |             |             |    | 1600   |       |
| RWY 14   |             |             |    | 4.8 NM |       |
| CATEGORY   | A           | B           | C  | D      |       |
| LNAV MDA   | 480-1       | 468 (500-1) | NA |        |       |
| CIRCLING   | 480-1       | 560-1       | NA |        |       |
|  | 468 (500-1) | 548 (600-1) |    |        |       |
| NEWPORT NEWS /WILLIAMSBURG INTL ALTIMETER                      |             |             |    |        |       |
| LNAV MDA   | 500-1       | 488 (500-1) | NA |        |       |
| CIRCLING   | 500-1       | 580-1       | NA |        |       |
|  | 488 (500-1) | 568 (600-1) |    |        |       |
| HIRL Rwy 14-32 0   |             |             |    |        |       |

RNAV (GPS) RWY 14

NE-3, 07 AUG 2025 to 04 SEP 2025

NE-3, 07 AUG 2025 to 04 SEP 2025