

VOR/DME EWO 113.95 Chan 86(Y)	APP CRS 132°	Rwy Idg TDZE Apt Elev N/A N/A 921
---	------------------------	---

VOR/DME-A

TAYLOR COUNTY (AAS)

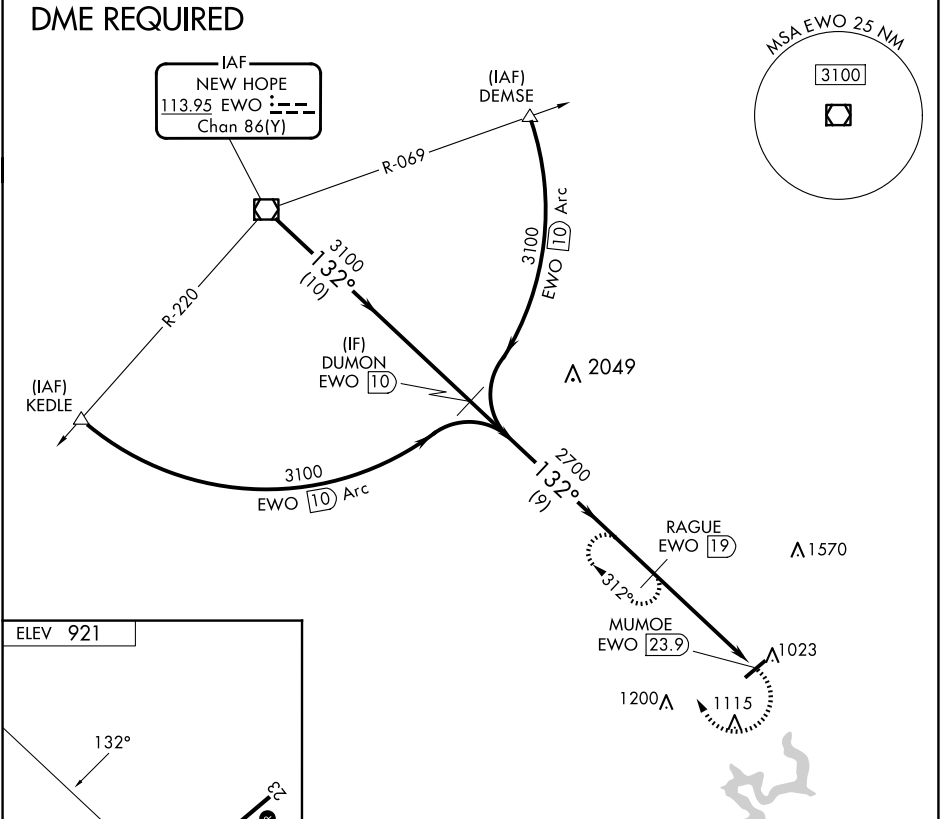
NA

When local altimeter setting not received, use Somerset altimeter setting: increase all MDA 100 feet; increase Cat C visibility ¼ mile and Cat D visibility ½ mile.

MISSED APPROACH: Climbing right turn to 3100 on heading 360° and on EWO R-132 to RAGUE/19 DME and hold.

AWOS-3 121.125	INDIANAPOLIS CENTER 124.625 353.65	UNICOM 122.7 (CTAF) 0
--------------------------	--	---------------------------------

DME REQUIRED



EWO VOR/DME	DUMON EWO 10	3100 hdg 360°	RAGUE EWO 19	MUMOE EWO 23.9
3100	3100	2700		
10 NM		9 NM	4.9 NM	
CATEGORY	A	B	C	D
CIRCLING	1540-1	619 (700-1)	1540-1¾ 619 (700-1¾)	1660-2¼ 739 (800-2¼)

SE-1, 07 AUG 2025 to 04 SEP 2025

SE-1, 07 AUG 2025 to 04 SEP 2025