

WAAS CH <b>90223</b> <b>W05A</b>	APP CRS <b>055°</b>	Rwy Idg TDZE <b>904</b> Apt Elev <b>921</b>	<b>5004</b>
--	------------------------	---	-------------

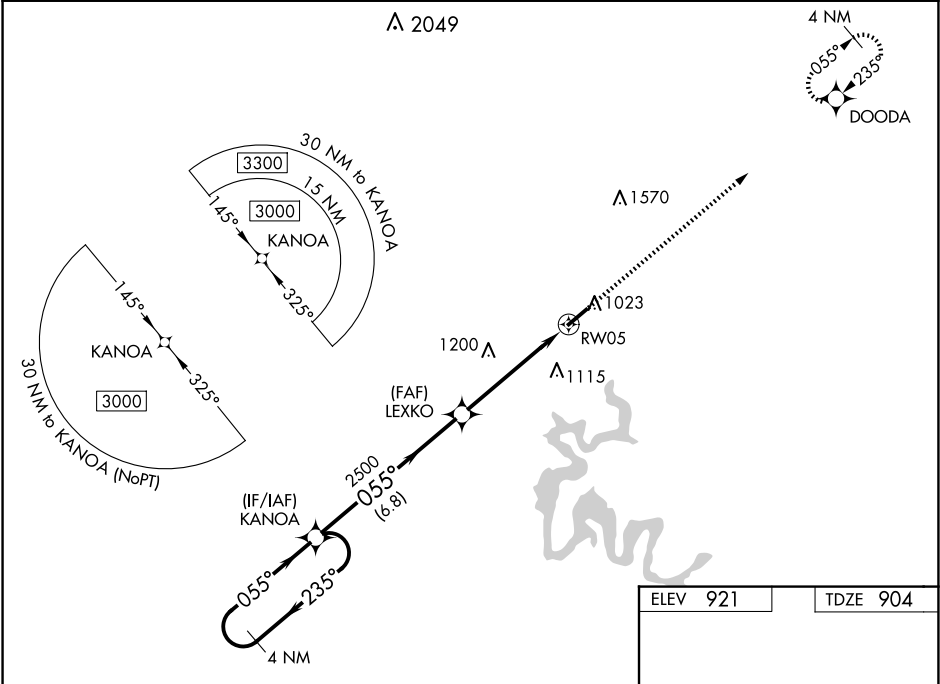
RNAV (GPS) RWY 5

TAYLOR COUNTY (AAS)

Baro-VNAV NA when using Somerset altimeter setting. For uncompensated Baro-VNAV systems, LNAV/VNAV NA below -16°C (4°F) or above 54°C (130°F). DME/DME RNP-0.3 NA. When local altimeter setting not received, use Somerset altimeter setting: increase all DA 89 feet and all MDA 100 feet; increase LPV all Cats visibility ¼ mile, increase LNAV/VNAV all Cats visibility ⅓ mile, increase LNAV Cats C and D visibility ¼ mile, and increase Circling Cat C visibility ¼ mile and Cat D visibility ½ mile. Helicopter visibility reduction below ⅓ SM NA. Night landing: Rwy 5 NA for Cat C and D aircraft.

MISSED APPROACH:  
Climb to 3000 direct DOODA and hold.

AWOS-3 <b>121.125</b>	INDIANAPOLIS CENTER <b>124.625 353.65</b>	UNICOM <b>122.7 (CTAF) 0</b>
--------------------------	--	---------------------------------



4 NM Holding Pattern

VGSI and RNAV glidepath not coincident (VGSI Angle 3.50/TCH 48).

KANOVA

3000

235°

055°

GP 3.00° TCH 40

055°

2500

6.8 NM

5 NM

LEXKO

2500

RW05

DOODA

3000

5004 x 75

1.0% UP

055°

CATEGORY	A	B	C	D
LPV DA	1154-1		250 (300-1)	
LNAV/VNAV DA	1389-1¾		485 (500-1¼)	
LNAV MDA	1340-1 436 (500-1)		1340-1¼ 436 (500-1¼)	
CIRCLING	1380-1 459 (500-1)	1400-1 479 (500-1)	1480-1½ 559 (600-1½)	1660-2¼ 739 (800-2¼)

MIRL Rwy 5-23 0  
REIL Rwys 5 and 23 0