

WAAS CH 50223 W23A	APP CRS 235°	Rwy Idg 5004 TDZE 921 Apt Elev 921
----------------------------------------	------------------------	---------------------------------------------------------------

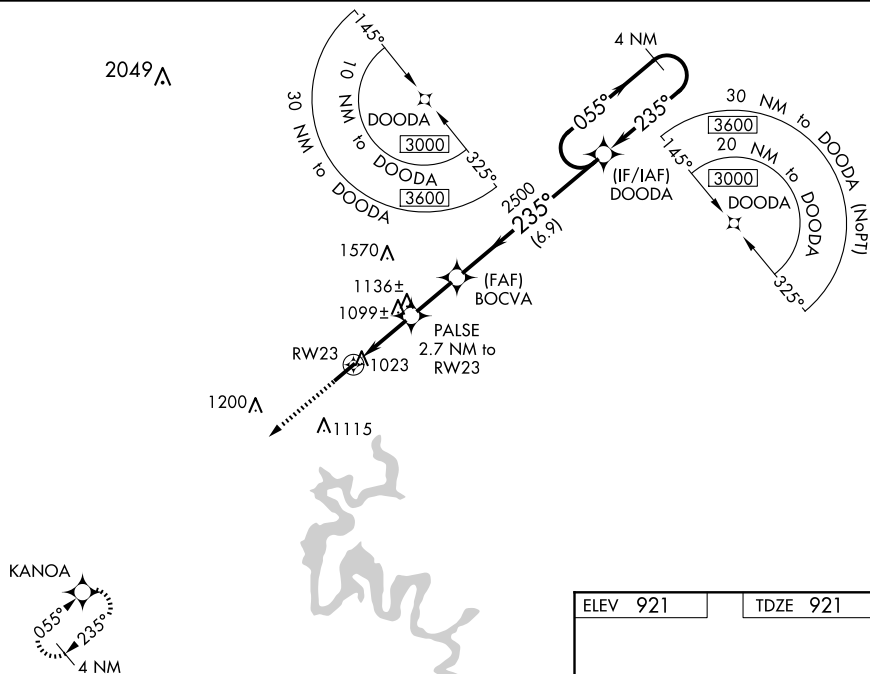
RNAV (GPS) RWY 23

TAYLOR COUNTY (AAS)

Baro-VNAV NA when using Somerset altimeter setting. For uncompensated Baro-VNAV systems, LNAV/VNAV NA below -16°C (4°F) or above 54°C (130°F). DME/DME RNP-0.3 NA. When local altimeter setting not received, use Somerset altimeter setting: increase all DA 89 feet and all MDA 100 feet; increase LPV all Cats visibility $\frac{1}{4}$ mile, increase LNAV/VNAV all Cats visibility $\frac{3}{8}$ mile, increase LNAV Cats C and D visibility $\frac{1}{4}$ mile, and increase Circling Cats C visibility $\frac{1}{4}$ mile and Cat D visibility $\frac{1}{2}$ mile. Helicopter visibility reduction below $\frac{3}{4}$ SM NA.

MISSED APPROACH:
Climb to 3000 direct
KANOA and hold.

AWOS-3 121.125	INDIANAPOLIS CENTER 124.625 353.65	UNICOM 122.7 (CTAF) 0
--------------------------	----------------------------------------------	---------------------------------



3000 KANOA

VGSI and RNAV glidepath not coincident (VGSI Angle 3.25/TCH 40).

4 NM Holding Pattern

DOODA

055° 3000

235°

2500

235°

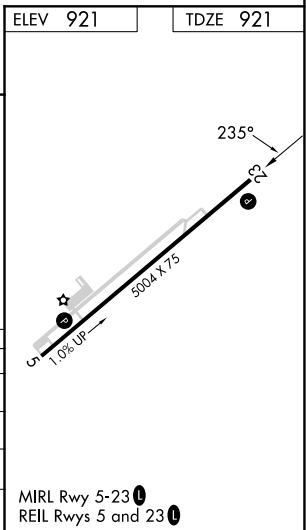
1820

2500

GP 3.00° TCH 48

2.7 NM 2.1 NM 6.9 NM

CATEGORY	A	B	C	D
LPV DA	1177- ³ / ₄	256 (300- ³ / ₄)		
RNAV/ VNAV DA	1366-1 ¹ / ₂	445 (500-1 ¹ / ₂)		
RNAV MDA	1360-1	439 (500-1)	1360-1 ¹ / ₄	439 (500-1 ¹ / ₄)
CIRCLING	1380-1 459 (500-1)	1400-1 479 (500-1)	1480-1 ¹ / ₂ 559 (600-1 ¹ / ₂)	1660-2 ¹ / ₄ 739 (800-2 ¹ / ₄)



RNAV (GPS) RWY 23