

WAAS

CH 58230

W11A

APP CRS

113°

Rwy ldg

TDZE

Apt Elev

5500

1574

1574

RNAV (GPS) RWY 11

WORTHINGTON MUNI (OTG)

RNP APCH - GPS.

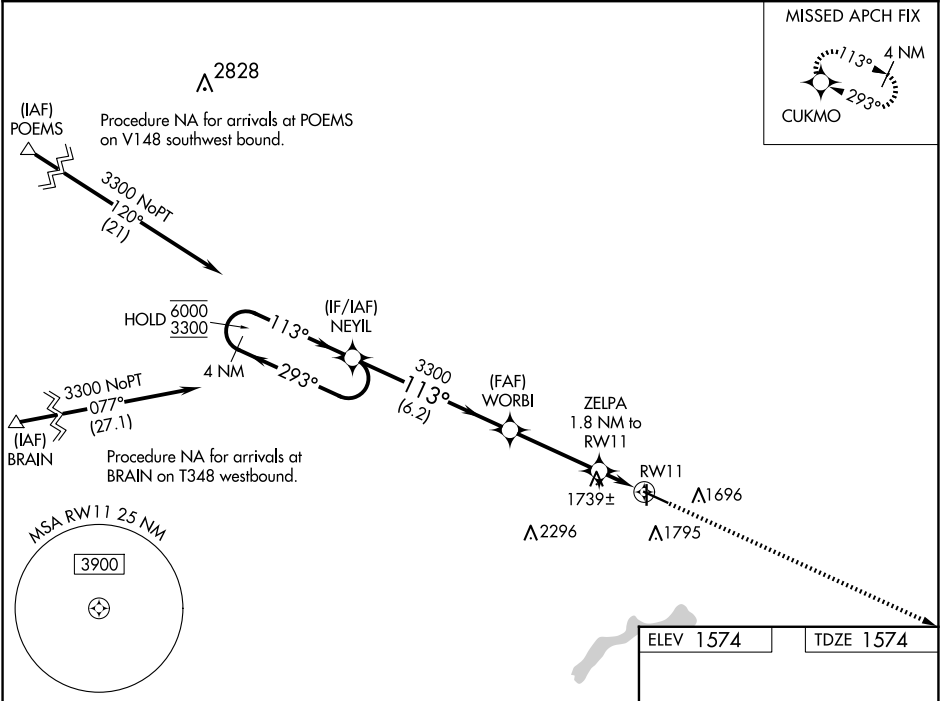
▼

▲

For uncompensated Baro-VNAV systems, LNAV/VNAV NA below -23°C or above 54°C.

MISSED APPROACH: Climb to 3300 direct CUKMO and hold.

AWOS-3PT 121.075	MINNEAPOLIS CENTER 132.05 317.4	UNICOM 122.8 (CTAF) 0
---------------------	------------------------------------	--------------------------



4 NM Holding Pattern

NEYIL

WORBI

3300

ZELPA 1.8 NM to RW11

3300

CUKMO

113°

293°

113°

3300

2180

1.2 NM to RW11

RW11

GP 3.00°

TCH 42

6.2 NM

3.5 NM

0.6

1.2 NM

CATEGORY	A	B	C	D
LPV DA	1824-1	250 (300-1)		
LNAV/VNAV DA	1826-1	252 (300-1)		
LNAV MDA	2000-1 426 (500-1)	2000-1¼ 426 (500-1¼)		
CIRCLING	2100-1 526 (600-1)	2100-1½ 526 (600-1½)	2320-2½ 746 (800-2½)	

ELEV 1574

TDZE 1574

81

113°

5300 X 100

4200 X 75

36

1629

MIRL Rwy 18-36

HIRL Rwy 11-29

REIL Rws 11, 18, and 36