

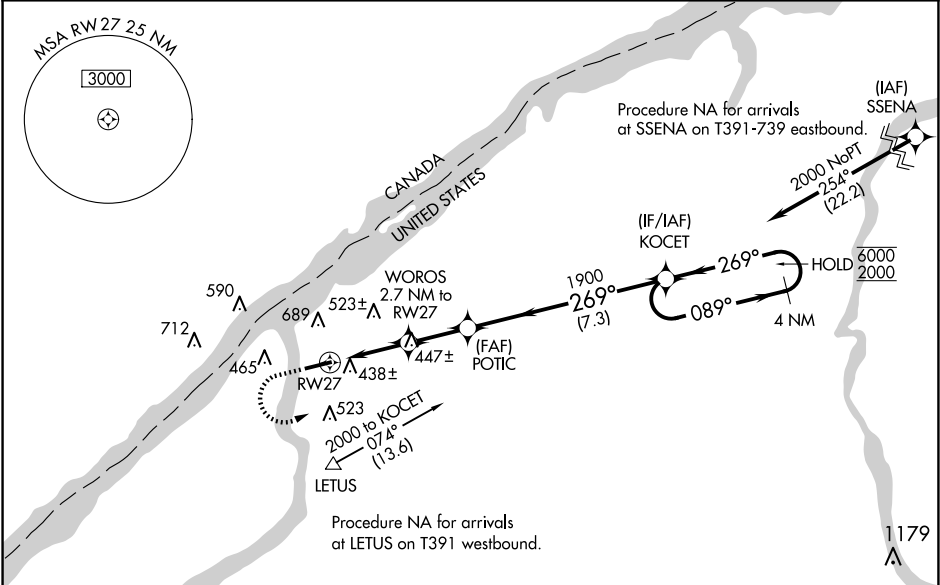
WAAS CH 40041 W27A	APP CRS 269°	Rwy Ldg TDZE Apt Elev	6035 302 302
--	------------------------	-----------------------------	---

RNAV (GPS) RWY 27

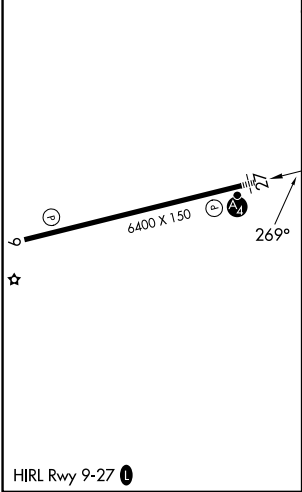
OGDENSBURG INTL (OGS)

RNP APCH - GPS.	MALSF	MISSED APPROACH: Climb to 800 then climbing left turn to 2000 direct KOCET and hold.
<div><div>▼</div><div>▲</div></div> For uncompensated Baro-VNAV systems, LNAV/VNAV NA below -15°C or above 54°C.	<div><div>🚗</div><div>🚧</div></div>	

AWOS-3 118.525	BOSTON CENTER 135.25 377.1	UNICOM 122.8 (CTAF) 0
--------------------------	--------------------------------------	---------------------------------



ELEV 302	D	TDZE 302
----------	----------	----------



800 ↑		2000 ↷		KOCET ✧		VGSI and RNAV glidepath not coincident. (VGSI Angle 3.00°/ TCH 45).		4 NM Holding Pattern	
		1.1 NM to RW27		1.6 NM		2.2 NM		7.3 NM	
CATEGORY		A		B		C		D	
LPV DA				552-¾		250 (300-¾)			
LNAV/ VNAV DA				717-1⅛		415 (500-1⅛)			
LNAV MDA		700-1		398 (400-1)		700-1⅛		398 (400-1⅛)	
CIRCLING		760-1 458 (500-1)		1000-1 698 (700-1)		1000-2 698 (700-2)		1000-2¼ 698 (700-2¼)	